

CHAPTER IV

FINDINGS AND DISCUSSION

In this chapter the researcher presented findings and discussion. The findings include types of Loss and Gain also the frequency of Loss and Gain which are found in the Translations produced by “Fast Translation”

A. FINDINGS.

1. Loss and Gain Found in Fast Translation’s Works

There are 10 works translation produced by Fast Translation. However, the researcher only chose 5 of them. Three non-fiction texts (asticle and 2 abstracts) and two fiction texts (comic and song). The Non-fiction article was translated from English to Indonesian and the two abstracts waere translated from Indonesian to English. The fiction comic was translated from English to Indonesian and the song was translated from Indonesian to English.

The researcher gave the code to the translation Code of Loss is WL (Word Loss), PL (Phrase Loss), SL (Sentence Loss) and the code for Gain is Code of Gain : WG (Word Gain), PG (Phrase Gain), SG (Sentence Gain)

A. Translation of Non-fiction Text from English to Indonesian

The researcher chose one title from non-fiction text translated from English to Indonesian title is **Leadership Strategy and Styles**. This is an article. This text is about some types of leadership that will help the leader to determine which type of leadership that can be applied in which situations in order to reach the goal.

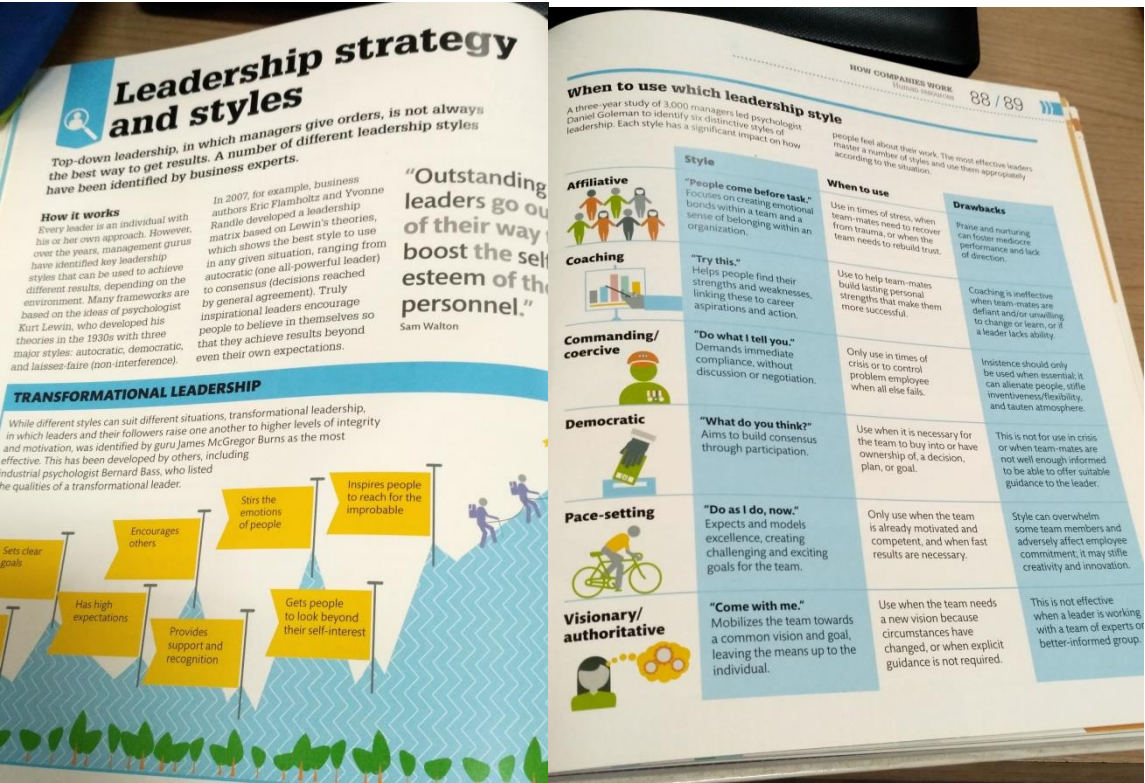


Table 4.1 Analysis of Loss and Gain in the Leadership Strategy and Style translation

text

No	Source Text	The kind of Loss and Gain		Target text translation	Information on Loss and Gain
		Loss	Gain		

1	Every leader is <u>an</u> individual with <u>his or her</u> approach.	WL	WG	Setiap pemimpin adalah individu dengan pendekatannya sendiri.	<p>An article “an” is deleted because it is not appropriate in target language. If it is translated into Indonesian, it will be “seorang individu”</p> <p>In translating “his or her” in target language this word was replaced with “nya” not “milik dia laki-laki atau dia perempuan” because gender marks like that is not recognized in Indonesian sentences.</p>
2	Which shows the best style to use <u>in any given</u> situation		WG	Yang menunjukkan gaya terbaik untuk di gunakan dalam situasi tertentu.	In translating “in any given” the translators chose to change it into “tertentu” because they thought it was better than “di setiap situasi” it will change the meaning, this is

					due to a type of leadership cannot be used in every situation.
3.	<u>Truly</u> inspirational leaders encourage people to believe in themselves so that they achieve <u>results</u> beyond even their own expectation	WL	WG	Para pemimpin yang benar-benar inspiratif mendorong orang untuk percaya pada diri mereka sendiri sehingga mereka dapat mencapai <u>hasil</u> bahkan melebihi harapan mereka sendiri	The translators prefer to translate “truly” into “benar-benar” to emphasize that word rather than delete it. Literally, “results” in Indonesian mean “hasil-hasil” however the translators chose only put “hasil” because “hasil-hasil” would seem like a waste of word in Indonesian, plural marks are not always used.
4.	<u>“Outstanding leaders go out</u> of their way to boost the self-	WL	PG	“Pemimpin yang luar biasa berusaha keras untuk	“leaders go out” translated into “pemimpin yang luar biasa berusaha keras” the translators prefer to choose

	esteem”			meningkatkan harga diri pribadi dan anggota nya ”	<p>“berusaha keras” to replace “go out” rather than “pergi keluar”</p> <p>And also there is an addition “anggotanya” in “the self-esteem” because the context of leadership is not only about the leaders but also about their employees.</p>
5.	While different <u>styles</u> can suit different situations	WL	WG	Sementara gaya yang berbeda dapat disesuaikan dengan situasi yang berbeda.	<p>In translating “styles” the translators determine to put only “gaya” than put “gaya-gaya”</p> <p>There is an addition “dengan” although there is no “with” in source text, in order to make the sentence good in target language</p>

6.	Transformational leadership in which leaders and their followers <u>raise one another to</u> higher levels of integrity and motivation, was identified by James McGeorge Burns as the most effective.		WG	Kepemimpinan transformational dimana para pemimpin dan pengikutnya saling menaikkan tingkat integritas dan motivasi yang lebih tinggi, telah diidentifikasi oleh James McGeorge sebagai yang paling efektif.	“raise one another to” the translators determine to translated it into “saling menaikkan” than “menaikkan satu dan lainnya”
7.	Including industrial psychologist Bernard, who listed <u>the qualities</u> of a	WL		Termasuk ahli psikologi dunia, Bernard yang mencatat kualitas seorang pemimpin	In translating “the qualities” the translators prefer to translate into “kualitas” rather than “kualitas-kualitas”

	transformational leader.			transformasional.	
8.	When to use <u>which</u> leadership style		WG	Kapan menggunakan gaya kepemimpinan yang sesuai	“which” the translators determine to translate that word into “yang sesuai”
9.	<u>A three-year study of 3.000 managers</u>		PG	Sebuah studi yang dilakukan selama tiga tahun pada 3.000 manajer	“a three-year study of 3.000 managers” the translators translated that phrase into “Sebuah studi yang dilakukan selama tiga tahun pada 3.000 manajer” to match with the target language
10.	The most effective master <u>a number of styles</u> and use them appropriately		PG	Cara yang paling efektif adalah dengan menguasai berbagai gaya dan	In translating “a number of styles” the translators prefer to change this phrase which translated into “berbagai gaya” rather than “sejumlah gaya-gaya”

	according to the situation.			menggunakannya sesuai dengan situasi.	
11.	<p><i>“People come before task”</i></p> <p>focuses on creating bonds within a learn and a sense of belonging within an organization</p>		WG	<p>“Para pekerja</p> <p>hadir sebelum ditugaskan”</p> <p>berfokus pada terciptanya ikatan emosional dengan pembelajaran dan rasa saling memiliki dalam berorganisasi</p>	<p>“People” the translators translated this word into “para pekerja” not as the literal translation “orang-orang”</p>
12.	<p>Helps people to find their <u>strengths and weakness</u></p> <p>linking these to career aspirations and action</p>	WL		<p>Membantu pekerja untuk menemukan <u>kekuatan dan kelemahan</u></p> <p>mereka yang berhubungan dengan aspirasi</p>	<p>“strengths and weakness” the translators preferred to translate into “kekuatan dan kelemahan” rather than “kekuatan-kekuatan dan kelemahan-kelemahan” there is addition “dalam bekerja”</p>

				dan tindakan dalam bekerja.	eventhough in the source language there is no word that explain it.
13.	Coaching is ineffective when team- mates are defiant and/or unwilling to change or learn of if a leader lacks ability		WG	Cara kepemimpinan seperti ini kurang efektif ketika rekan satu tim menolak dan/atau tidak mau mengubah atau belajar jika pemimpin nya kurang mempunyai kemampuan.	There some additions in the target language, such as, “cara”, “seperti ini”, “nya” and “mempunyai” to match with the target language semantically

*appendix 2

B. Translation of Non-fiction Text from Indonesian to English

Here is the example of the Non-Fiction Text from Indonesia to English

Table 4.2 Example of Abstract Translation Texts from Indonesian to English

Source Language Text

ABSTRAK

NORHAYATI. Faktor-Faktor Yang Mempengaruhi Anemia Pada Ibu Hamil Di Rumah Sakit Umum Daerah Jaraga Sasameh Buntok Tahun 2016. Di bimbing oleh NOVALIA WIDIYA NINGRUM dan FAKHRUDDIN RAZY.

Latar Belakang : Setiap hari di tahun 2013 sekitar 800 perempuan di dunia meninggal karena komplikasi kehamilan dan kelahiran anak, pada proses kelahiran dapat mengakibatkan perdarahan dan akhirnya menyebabkan anemia. Anemia pada ibu hamil dapat menyebabkan perdarahan postpartum karena kadar Hb yang kurang dapat mempengaruhi kerja otot rahim dan mengakibatkan gangguan kontraksi saat bersalin. Kejadian anemia kehamilan berkisar antara 20% sampai 89% dengan menetapkan Hb 11g% (g/dl) sebagai dasarnya. Dari hasil studi pendahuluan yang dilakukan di Rumah Sakit Umum Daerah (RSUD) Jaraga Sasameh Buntok didapatkan data ibu dengan anemia tahun 2014 sebesar 26,2% meningkat ditahun 2015 menjadi 29,6 %.

Tujuan Penelitian : penelitian ini bertujuan mengidentifikasi faktor-faktor yang mempengaruhi anemia pada ibu hamil di RSUD Jaraga Sasameh Buntok Tahun 2016 Metode Penelitian : Metode penelitian ini

menggunakan metode *survey analitik* dengan menggunakan rancangan *cross sectional*. Subyek penelitian ini adalah keseluruhan jumlah awal kunjungan ibu hamil (K1) di RSUD Jaraga Sasameh Buntok sebanyak 453 dengan sampel kasus sebanyak 82. Teknik pengambilan sampel ditentukan melalui teknik pengambilan sampel menggunakan teknik acak sederhana (*simple random sampling*). Pengumpulan data melalui data sekunder dengan menggunakan ceklist, dan penelitian ini menggunakan analisis univariat dan analisis bivariat.

Hasil Penelitian: Dari hasil uji *chi-square* di dapatkan bahwa faktor umur nilai $p = 0,000$ dan nilai $\alpha = 0,05$ $p < \alpha$, faktor paritas didapatkan nilai $p = 0,000$ dan nilai $\alpha = 0,05$ $p < \alpha$, faktor status gizi didapatkan nilai $p = 0,000$ dan nilai $\alpha = 0,05$ $p < \alpha$, faktor pendidikan didapatkan nilai $p = 0,000$ dan nilai $\alpha = 0,05$ $p < \alpha$.

Simpulan : Berdasarkan hasil penelitian dapat di simpulkan bahwa semua variabel yang diteliti memiliki hubungan yang signifikan terhadap kejadian anemia pada ibu hamil.

Kata Kunci : kejadian anemia, umur, paritas, pendidikan, status gizi

Translation into Target Language

Abstract

NORHAYATI

**FACTORS AFFECTING ANEMIA IN PREGNANT WOMEN AT THE
REGIONAL HOSPITAL IN JARAGA SASAMEH BUNTOK 2016**

Guided by Novalia Widiya Ningrum and Fakhruddin Razy

Background

Every day in 2013, about 800 women in the world died because of pregnancy complications and the child birth, in the birth process can affect bleeding and eventually affect to anemia. Anemia in pregnant women can cause postpartum hemorrhage because of less Hb levels can affect the working of the uterus muscles and affect to contractions during labor. The case of pregnancy anemia ranges between 20% to 89% by setting Hb 11g% (g / dl) as its base. From the results of conducted preliminary studies at the Regional Hospital in Jaraga Sasameh Buntok obtained the data for mothers with anemia in 2014 amounted to 26.2% increasing in 2015 to 29.6%.

Research Purposes

This study aims to identify the factors that affect anemia in pregnant women at the Regional Hospital in Jaraga Sasameh Buntok 2016

Research Methods

This research using analytical survey method by a cross sectional design. The subjects of this study were the total number of initial visits of pregnant women (K1) at the Regional Hospital in Jaraga Sasameh Buntok as many as 453 with a sample of 82 cases. The sampling technique is determined by using a simple

random technique. The collection of data obtained through secondary data by using the checklist, and this study used univariate and bivariate analysis.

Research Result

From the results of chi-square test found that age p factor = 0,000 and α value = 0.05 $p < \alpha$, parity factor obtained p value = 0.000 and α value = 0,05 $p < \alpha$, nutritional status factor obtained p value = 0.000 and α value = 0,05 $p < \alpha$, educational factor obtained p value = 0,000 and α value = 0,05 $p < \alpha$.

Conclusion

Based on the results of research can be concluded that all variables studied have a significant relationship to the case of anemia in pregnant women.

Keywords : Case of anemia, age, parity, education, nutritional status.

Source Translation Text

HUBUNGAN PENGETAHUAN DAN PAPARAN INFORMASI TENTANG MENSTRUASI DENGAN SIKAP KESIAPAN REMAJA PUTRI MENGHADAPI MENARCHE

(Studi Observasional Analitik pada Siswi Kelas VI SD/Sederajat di Kota
Banjarmasin)

Yenni Hafizah¹, Roselina Panghiyangani², Fahrini Yulidasari³

¹Mahasiswa Program Studi Kesehatan Masyarakat

² Departemen Biologi Program Studi Pendidikan Dokter

³Departemen Gizi dan Kesehatan Ibu dan Anak Program Studi Kesehatan
Masyarakat

Fakultas Kedokteran Universitas Lambung Mangkurat Banjarbaru

Email: yennihafizah28@gmail.com

Abstrak

Masa remaja merupakan peralihan dari masa anak ke masa dewasa yang melibatkan perubahan berbagai aspek seperti biologis, psikologis, dan sosial budaya. Menstruasi pertama (menarche) merupakan masa mendebarkan bagi remaja putri karena pertama mengalaminya. Indonesia menempati urutan ke-15 dari 67 negara. Pergeseran usia menarche menyebabkan remaja putri mengalami dampak stres emosional dan yang terparah adalah kanker ovarium dan payudara. Pada saat tersebut alat-alat reproduksi belum berfungsi secara optimal dan belum siap mengalami perubahan-perubahan sehingga timbul nyeri ketika menstruasi. Kota Banjarmasin merupakan kota dengan jumlah populasi siswa sekolah dasar terbanyak di Kalimantan Selatan. Pada tahun 2017 tercatat sebanyak 28.920 siswa SD dengan 5.183 siswa adalah berjenis kelamin perempuan yang sedang berada di kelas VI. Penelitian ini bertujuan untuk menjelaskan hubungan pengetahuan dan paparan informasi dengan sikap kesiapan remaja putri meghadapai menarche di Kota Banjarmasin. Penelitian ini merupakan penelitian kuantitatif menggunakan desain cross sectional. Populasi adalah seluruh remaja putri sekolah dasar di Kota

Banjarmasin. Penetapan sampel menggunakan teknik multiple sampling dengan sample sebanyak 148 siswa. Hasil penelitian menunjukkan bahwa ada hubungan antara pengetahuan ($p\text{-value}=0,0001$) dan paparan informasi ($p\text{-value}=0,0001$) dengan kesiapan remaja putri menghadapi menarche. Sehingga dapat disimpulkan bahwa pengetahuan dan paparan informasi berhubungan dengan sikap kesiapan menarche di SD/ sederajat di Kota Banjarmasin.

Kata kunci: pengetahuan, paparan informasi, sikap kesiapan Menarche.

Translation into Target Language

**CORRELATION BETWEEN KNOWLEDGE AND INFORMATION
EXPOSURE ABOUT MENSTRUATION WITH THE READINESS
ATTITUDE OF ADOLESCENT TO FACE UP *MENARCHE*
(Observational Analytical Study on Grade VI Elementary School Students/
Equal in Banjarmasin City)**

Yenni Hafizah¹, Roselina Panghiyangani², Fahrini Yulidasari³

¹Students of Public Health Study Program

²Doctor Education Program of Biology Department

³Services Post Nutritional Supplements and Maternal and Child Health
department of Public Health Study Program Students

Medicine Faculty of Lambung Mangkurat Banjarbaru University

E-mail: yennihafizah28@gmail.com

Abstract

Adolescence is a transition from childhood to adulthood that involves changes in various aspects such as biological, psychological, and sociocultural. The first menstruation or *menarche* is an exciting time for young women because they experience it for the first time. **Indonesia ranks 15th of 67 countries.** *Menarche* age shift causes young girls to experience the effects of emotional stress and the worst effects are breast and ovarian cancer. At that time, the reproductive devices have not functioned optimally and not ready yet to undergo changes so that the pain arises when menstruating. Banjarmasin is the city with the largest population of primary school students in South Kalimantan. In 2017, recorded 28.920 elementary students with 5.183 students are female sexes who are in six grades. This research aims to explain the relationship of knowledge and information exposure with the attitude of teenage girls ready to face the *menarche* in Banjarmasin city. This research is a quantitative research using cross sectional design. The population is all elementary school girls in Banjarmasin City. Determination of samples using multiple sampling technique with a sample of 148 students. The results showed that there was a correlation between knowledge ($p\text{-value} = 0.0001$) and information exposure ($p\text{-value} = 0.0001$) with the readiness of girls in facing *menarche*. So it can be concluded that knowledge and information exposure related to the attitude of readiness *menarche* in Primary School or equal in Banjarmasin city.

Keywords: knowledge, information exposure, *Menarche* readiness attitude.

Translation into Target Language

**CORRELATION BETWEEN KNOWLEDGE AND INFORMATION
EXPOSURE ABOUT MENSTRUATION WITH THE READINESS
ATTITUDE OF ADOLESCENT TO FACE UP *MENARCHE*
(Observational Analytical Study on Grade VI Elementary School Students/
Equal in Banjarmasin City)**

Yenni Hafizah¹, Roselina Panghiyangani², Fahrini Yulidasari³

¹Students of Public Health Study Program

²Doctor Education Program of Biology Department

³Services Post Nutritional Supplements and Maternal and Child Health
department of Public Health Study Program Students

Medicine Faculty of Lambung Mangkurat Banjarbaru University

E-mail: yennihafizah28@gmail.com

Abstract

Adolescence is a transition from childhood to adulthood that involves changes in various aspects such as biological, psychological, and sociocultural. The first menstruation or *menarche* is an exciting time for young women because

they experience it for the first time. **Indonesia ranks 15th of 67 countries.**

Menarche age shift causes young girls to experience the effects of emotional stress and the worst effects are breast and ovarian cancer. At that time, the reproductive devices have not functioned optimally and not ready yet to undergo changes so that the pain arises when menstruating. Banjarmasin is the city with the largest population of primary school students in South Kalimantan. In 2017, recorded 28.920 elementary students with 5.183 students are female sexes who are in six grades. This research aims to explain the relationship of knowledge and information exposure with the attitude of teenage girls ready to face the *menarche* in Banjarmasin city. This research is a quantitative research using cross sectional design. The population is all elementary school girls in Banjarmasin City. Determination of samples using multiple sampling technique with a sample of 148 students. The results showed that there was a correlation between knowledge ($p\text{-value} = 0.0001$) and information exposure ($p\text{-value} = 0.0001$) with the readiness of girls in facing *menarche*. So it can be concluded that knowledge and information exposure related to the attitude of readiness *menarche* in Primary School or equal in Banjarmasin city.

Keywords: knowledge, information exposure, *Menarche* readiness attitude.

The result of analysis of the text above, is explained in the table below

Table 4.3 Analysis of Loss and Gain in Abstract Translation Text about Anemia in Pregnant Women

No	Source Text Literal	The kind of Loss and Gain		Literal translation	Information on Loss and Gain
		Loss	Gain		
1.	Pada proses kelahiran dapat mengakibatkan pendarahan dan akhirnya menyebabkan anemia	PL		In the birth process can affect bleeding and eventually anemia.	The translators prefer did not translate the word “menyebabkan” because if it translated it will wordy.
2.	Dari hasil studi pendahuluan <u>yang dilakukan</u> di Rumah Sakit Umum Daerah (RSUD) Jaraga Sasameh Buntok didapatkan data ibu dengan anemia tahun 2014 sebesar	WL		From the results of previous study of anemia in pregnant women at the Regional Hospital in Jaraga Sasameh Buntok obtained the data in 2014 is 26.2% then increase in 2015 to be 29.6%	The translators did not translate the word “yang dilakukan” because it’s not appropriate to translated into target language

	26.2% meningkat di tahun 2015 menjadi 29.6%				
--	---	--	--	--	--

Table 4.4 Analysis of Loss and Gain in Abstrack Translation Text about Menarch

C. Translation Fiction Text from English to Indonesian

This text is taken from the comic with title “X-Venture Explorers Rage of Kings Lion vs Tiger” then the translators take part of the comic from page 83 to 93. In this story two boys and a girl found some types of cat that caught by the criminal. Then the criminal knew and want to kidnap these children. However, children had ability to communicate with all types of cat and they asked it to help.

Table 4.5 Analysis of Loss and Gain in the Comic Translation Text entitled X-Venture X-plorers “Rage of Kings Lion Vs Tiger”

No	Source Text Literal	The kind of Loss and Gain		Target text translation	Information on Loss and Gain
		Loss	Gain		
1.	It can even change direction in mid-air, and uses its thick tail		WG	Dia bahkan bisa berbelok saat melompat di udara dan memakai ekor	The translators decided to put “melompat” in the target language. It

	for balance.			tebal nya untuk keseimbangan	would be miss understanding if they didnt add that word, because they described about “the kind of cats” it meant that the cat can’t fly.
2.	No need.. explain.. bad guys!		WG	Tidak perlu.. penjelasan.. dasar orang jahat	In the target language to get the sense of the story so they added “dasar”
3.	Tazen! No! Take it easy!		PG	Tazen! Jangan lakukan itu!	In translating “Take it easy!” The translators prefer to translated it to be “jangan lakukan itu” ather than “santai saja” “or “tetap tenang”
4	You gonna get it!		SG	Rasakan ini !	The translators did not to translate that word into “kamu akan

					mendapatkan ini instead they change it into “rasakan ini”
5.	Snf.. snf.. what now?		WG	Hiks.. hiks.. bagaimana ini?	The translators translated “what now?” into “bagaimana ini”
7.	Jake! Please hang on! Help is on its way.		PG	Jake! Bertahanlah! Bantuan akan segera datang.	The translators did not translate it into “bantuan sedang di jalan” they translated it into “akan segera datang”
8.	(punch) Sherry, that’s one mean right hook you got there.	SL		Sherry, pukulan mu benar-benar sakit.	In translating “that’s one mean right hook you got there” the translators prefer to change it into simple word “pukulan mu benar-benar sakit” rather than “pukulan mu tepat mengenai ku

					disini”
--	--	--	--	--	---------

*see the Appendix

A. Translation of Fiction Text from Indonesian to English

This text is a song from Andra and the backbone, it told about how the man love and revere a woman. The translators should pay attention to the diction with the ryhtm and harmony of the song.

Table 4.6 Analysis of Loss and Gain in Song Translation Text entitled “Sempurna”

No	Source Text	The kind of Loss and Gain		Target text translation	Information on Loss ad Gain
		Loss	Gain		
1.	Sempurna		WG	Amazing	The translators prefer to choose “amazing” rather than “perfect”
2.	Kau membuat diri ku akan slalu memuja mu		WG	You can make me will always, will always to loving you	The translators put addition “will always” to balance the rythm of song
3.	Di setiap langkah ku		WG	In my everyday	The translators prefer to choose “in my

					everyday” rather than “in my every step” or “in every
4.	Ku kan slalu memikirkan dirimu		WG	You’re the only one that I think so much	“you’re the only one that i think so much”
6.	Tak bisa ku bayangkan hidup ku tanpa cinta mu		WG	I’ve never imagine if I live without your love	The translators put addition “if I live” beside to make the rythm is appropriate it also makes the translation attractive.
7.	Jangan lah kau tinggalkan diriku		WG	Do you want to leave me lonely?	The translators change this clause to be an introgative “do you want to leave me lonely”
8.	Hanya bersama mu ku akan bisa		WG	Just with you i can be and do everything	“do everything”
9.	kau adalah		WG	you’re always in my	“always” the translators

	darah ku			blood	put that word as addition to adapt with the rythm and harmony
10.	kau adalah jantung ku		WG	you're always in my heart	"always" the translators put that word as addition to adapt with the rythm and harmony
11.	kau adalah hidup ku lengkapi diriku		WG	you're always in my life completed in myself	"always" the translators put that word as addition to adapt with the rythm and harmony
12.	oh sayang ku kau begitu sempurna		WG	Oh my baby you are so amazing	"amazing" the translators still translated "sempurna" with "amazing" in congruity
13.	Kau genggam tangan ku saat diriku lemah dan terjatuh		PG	You raised my hands when i weaken and fallen apart	"fallen apart" the translators prefer to choose that phrase rather than "falling"
14.	kau bisikan		SG	You gave me	In translating "kau

	kata dan hapus semua sesal ku			inspirations and cleared all of my regret	bisikan kata” the translators prefer to change it into “you gave me inspiration” rather than “you whisper the word”
--	----------------------------------	--	--	--	--

The number of loss process is 10 times and the number of gain process is 31 times, so the total number of loss and gain process found in the Translations produced by “Fast Translation” is 41 times.

2. Interview Result with Translation of Fast Translation

After the researcher finished analyse the data, the researcher did an interview with seven questions to find out about their social-culture background. In the interview the researcher asked the translators about their background of knowledge, then, MR said that *“Saya asli orang Barabai, di daerah saya adat istiadat nya sangat kental dan mempengaruhi bagaimana tata cara saya untuk bersosialisasi di lingkungan masyarakat di sekitar saya.”* Meanwhile AB said that *“Saya berasal dari Manarap yang terletak di kabupaten banjar, adat istiadat juga kental di lingkungan masyarakat di sekitar tempat tinggal saya.”* MR he is originally from Barabai, Center of Hulu Sungai where the culture is very strong and had influenced in their daily activity. AB, he is from Manarap, Kabupaten Banjar. The culture on his society also same as MR. They both have the same background of social-culture that strong enough influenced their daily activity.

Then the researcher asked about their background of study, MR said that *“saya lulusan dari Sekolah Dasar Negeri, Mts Negeri dan MA Negeri yang berada di daerah asal saya, saya mulai belajar bahasa Inggris dari saya berada di Sekolah dasar. Sedangkan AB berasal dari Sekolah dasar dan melanjutkan pendidikan nya di salah satu Pondok Pesantren modern yang berada di Banjarbaru, dimana salah satu peraturan yang ada disana mewajibkan santri nya untuk berkomunikasi menggunakan bahasa Inggris dan bahasa Arab dalam keseharian nya, tentu hal ini akan mengasah penguasaan bahasa dan memperkaya kosakata yang saya miliki.”* MR he graduated from the ordinary school, State Elementary School, State Islamic Junior High School, State Islamic Senior High School, he started learn English when he was in elementary school. Beside AB said that he graduated from one of famous boarding school in Banjarbaru that use bilingual language as their daily communication, and if they don't obey the rule they will get punishment. He was in there for 7 years. According to RZ and AB they have different background of study that it will influence how they chose the best diction in their translation. It included mastering the vocabulary and grammar/structure of sentence to make their translation more interesting.

The researcher want to know deeper about the frequency of translating the text, they said that *“tidak tentu tergantung ada tidak nya kostumer, tapi jika tidak ada pun, kami membiasakan untuk tetap menerjemah, mungkin lebih ke ranah yang konteks dan materi yang kami sukai, seperti menerjemah komik dan lagu, karna dari situ juga kami bisa memperkaya kosakata kami, dan membuat sense of sentence kami meningkat untuk memilih mana kata yang cocok untuk digunakan pada konteks tersebut.”* Eventhough

they could not predict when they will get the translation job, they still did the translation process by translating the things that they like to prove their ability.

The researcher also asked about the method that they use in translating process, they said *“kami menggunakan metode re-read the text, memang kami memakai berbagai aplikasi penerjemah sebagai sumber atau sandaran dari terjemahan kami, tetapi ketika sudah di terjemahkan, kami membaca lagi teks yang sudah di terjemahkan ke dalam bahasa target tadi untuk di perbaiki struktur katanya, diksi nya, menyesuaikan konteks nya, agar isi atau pesan yang ada dalam terjemahan yang kami hasilkan dapat tersalurkan kepada pembaca.”* When they started to translating the text they will read the whole text then translate it by used some translating application to make their time effective, however, they will also check the diction and grammar when it had translated to make sure that the result of their translation as best as they can.

The researcher asked about the management in their divided the part of they said *“tergantung dari deadline yang diberikan oleh kostumer, jika waktu yang di berikan dan kesibukan kami berdua, jika memang masih bisa di lakukan sendiri-sendiri maka akan kami lakukan, namun jika text yang diberikan panjang dan deadline nya cukup ketat kami akan membaginya 2 lalu akan kami gabungkan kemudian kami mengkoreksi terjemahan satu sama lainnya.”* To manage the distribution of the translation between two owner of “fast translation” they will divided into some category, when the customer will take it, how long the text which is translated, and what is the text about. It would be easier if the text was in their competence, however it would be harder when they translated the text was not in their competence.

“How do you accept the translation material? (in specific, same as their background of knowledge the theme about teaching and learning english, or they accept all) they stated that *“dalam menerima sebuah terjemahan, kami biasa nya akan menerima apa pun konteks dan pembahasan yang diminta oleh kostumer kami, walaupun nantinya kami akan mendapatkan kendala atas keterbatasan pengetahuan kami dalam bidang tersebut. Namun, kami akan berusaha sebaik mungkin agar hal tersebut tidak menjadi penghalang kami dalam menerjemahkan bidang-bidang keilmuan lainnya.* Although they would get some problem in translating something that was not fit with their field, they still tried to solve those problems.

“Have you ever do Loss and Gain” they said, *“sebelumnya memang kami tidak mengetahui akan teknik ini, namun tanpa sadar kami melakukan nya, karna tidak dapat di pungkiri bahwa pengurangan dan penambahan informasi dalam sebuah terjemahan pasti terjadi, agar tidak ada ketimpangan yang terjadi dalam target bahasa nya. Seperti misalnya sebuah tradisi atau idiom yang tidak bisa di dapat di dalam bahasa target, maka penerjemah bisa menggantikan istilah tersebut ke dalam istilah yang ada dalam masyarakat.”* They did not know about what Loss and Gain are, but when they knew that, they have did it for their translations. Because they realized in translating something that related to the culture and inerpret the writer’s mind were not same as translating word by word, because it transfer the main idea of what they meant.

“Why you do the translation job?” They said *“selain membuka relasi kami terhadap orang banyak, karna melakukan hal ini pun cukup membantu “uang jajan” kami sebagai anak perantauan, sekaligus hal yang cukup menyenangkan utnuk di*

lakukan serta hal ini juga terus mengasah dan menambah pengetahuan kami dari satu terjemahan ke terjemahan yang lain agar terus memperbaiki hal-hal yang masih keliru.” They want to do translating is because they like it beside they can great with new people out there, they also can increase their income from the payment of the translation.

From the interview result, the researcher found that there are some factors which is influence and how the translators are deciding to delete or add some information to make their translations’ quality better.

B. DISCUSSION

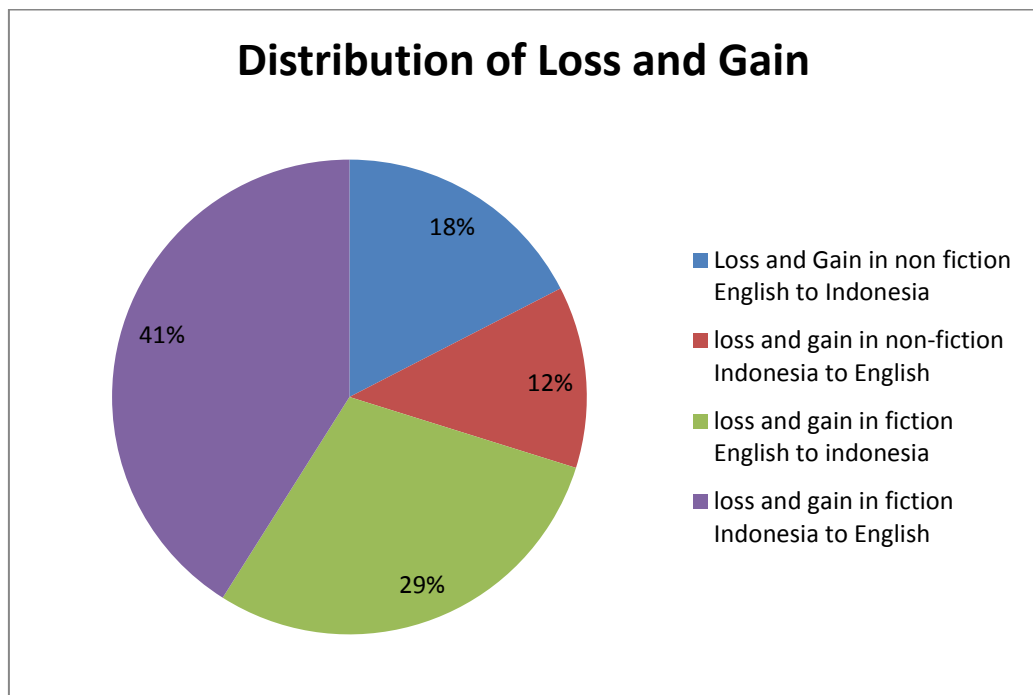
The frequency of Loss and Gain in the Translation produced by “Fast Translation” the complete results of the percentage can be seen in this table.

Table 4.7 Analysis of Frequency and Percentage of Loss and Gain in each Translation Text

Kinds	Type	Pattern of Loss and Gain	Frequency	Percentage of Total Words	Total of Loss and Gain
Non-fiction	English-Indonesian	Word Loss	6	3%	6
		Phrase Loss	-		
		Sentence Loss	-		
		Word Gain	6	3%	9

		Phrase Gain	3	1%	
		Sentence Gain	-	%	
	Indonesian- English	Word Loss	2	2%	3
		Phrase Loss	1	1%	
		Sentence Loss	-		
		Word Gain	2	2%	2
		Phrase Gain	-		
		Sentence Gain	-		
Fiction	English- Indonesia	Word Loss	-		1
		Phrase Loss	-		
		Sentence Loss	1	2%	
		Word Gain	3	6%	6
		Phrase Gain	2	4%	
		Sentence Gain	1	2%	
	Indonesia- English	Word Loss	-		0
		Phrase Loss	-		
		Sentence Loss	-		
		Word Gain	12	17%	14
		Phrase Gain	1	1%	
		Sentence Gain	1	1%	

As we can see a number of Loss and Gain in each kind of translation text, we also can the result of Loss and Gain in this diagram below:



From the table and diagram above, it could be seen that there are 41% Loss and Gain in the Fiction text which is translated in Indonesia to English. Also there are 29% Loss and Gain in the Fiction text which is translated in English to Indonesia. There is 18% Loss and Gain in The Non- Fiction which is translated in English to Indonesia. Then, the last there is 12% Loss and Gain in The Non-Fiction which is translated in Indonesia to English. Loss and Gain mostly appeared in The Fiction Translation text, it might because they like the material and they interested in that field. Instead, Loss and Gain rarely or just a few appeared in the Non-Fiction Translation text because of the difference knowledge of the translators and author.

Then based on the Documentary' result the researcher found out some pattern of Loss and Gain that appeared and not appeared in each translation text, for more detail of it, the researcher had explained in the explanation below

The analysis of Loss and Gain in the Translations Produced by “Fast Translation” showed that there are some complicated steps in translating the text, it’s not only how the translators change word by word, but it also how the message of the text and what the author meant can deliver to the reader. In translation process, the translators needed to deal with the Loss and Gain. The loss and gain occur because of some factors. First, the different background of social-culture of the author and the translators, the different of background study of the translators and the translators ability in mastering the language in SL and TL. Also, to make the translation had equivalent meaning, it’s meant that how the translators chooses the appropriate words is really important.

Based on the result of study, a number of Loss is 10 bubbles and the number of Gain is 31 bubbles, the total number of Loss and Gain process found in the Translations produced by “Fast Translation” is 41 bubbles.

In more detail, the text that the researcher had analysis divided into 2 general categorizes, Fiction and Non-Fiction, and in each categorize had English to Indonesia and Indonesia to English translation. Then, Loss and Gain on those translations are divided again into three pattern, they are; word, phrase, and sentence.

Non- Fiction translation text translated in English to Indonesia

In this translation text, a total number of words is 179 words with the pattern of Word Loss is 6 times (3%), Word Gain 6 times (3%), and Phrase Gain 3 time (2%). There is no Phrase Loss and Sentence Loss in this translation.

Non- Fiction translation text translated in Indonesia to English in this translation text, a total number of words is 84 words with the pattern of Word Loss is 2 times (2%),

Phrase Loss is 1 time (1%) , and Word Gain in 2 times (2%). There is no Sentence Loss, Word Gain, and Sentence Loss in this translation.

Fiction translation text translated in English to Indonesia in this translation text, a total number of words is 50 words with the pattern of Sentence Loss is 1 times (2%), Word Gain 3 times (6%), Phrase Gain is 2 times (4%), and Sentence Gain is 1 times (2%). There is no Word Loss and Phrase Loss in this translation.

Fiction translation text translated in Indonesia to English in this translation, a total number of words is 71 words with the pattern of Word Gain 12 times (17%), Phrase Gain 1 time (1%), and Sentence Gain 1 times (1%).

So, there are 41% Loss and Gain in the Fiction text which is translated in Indonesia to English. Also there are 29% Loss and Gain in the Fiction text which is translated in English to Indonesia. There is 18% Loss and Gain in The Non- Fiction which is translated in English to Indonesia. Then, the last there is 12% Loss and Gain in The Non-Fiction which is translated in Indonesia to English.

Form the explanations, although there is a difference number of Loss and Gain in each translation, Loss and Gain would always happen. Bassnett in Ulum (2015) stated that the translators have no choice then they tried to pick a TL expression that has the closest meaning with SL. It happens due to various causes. Lack of tenses in the TL, for example, would lead to loss of temporal meaning, while different mindset between SL and TL readers may, at the same time reduce and gain meaning.

Then, based on interview's result the researcher found out that both of the translators had the same background of social-culture in their daily life, but it doesn't fit

with the social-culture and the material of the text that they have translated. Finally, sometimes it made the translators which of the meaning that the author wanted to deliver. The translators had different background of study which is given the influence of their diction in translating the text similar with Soemarno in Istiqomah (2009) that had identified some problems that translators face up, such as:

1. The problem in mastering the SL and also TL.
2. The problem in the different social culture background of the writer and the translators.
3. The problem of the differences of mind's interprets.
4. The problem in background of knowledge or study of the translators that had to have.