

LAMPIRAN-LAMPIRAN

Hasil Perhitungan Data Kepemilikan Institusional

No.	Kode Emiten	2016	2017	2018
1	ADRO	44 %	44%	44%
2	ANTM	65%	65%	65%
3	ARTI	47%	35%	35%
4	CTTH	52%	57%	53%
5	DEWA	64%	64%	64%
6	ELSA	41%	41%	41%
7	GEMS	67%	67%	67%
8	HRUM	74%	74%	79%
9	MBAP	60%	60%	60%
10	MYOH	63%	63%	59%
11	PTBA	73%	73%	73%
12	RUIS	42%	60%	38%
13	SMMT	77%	89%	89%
14	SMRU	49%	50%	52%
15	TOBA	72%	83%	71%

Hasil Perhitungan Data Komposisi Dewan Komisaris Independen

No.	Kode Emiten	2016	2017	2018
1	ADRO	0,4	0,4	0,4
2	ANTM	0,33	0,33	0,4
3	ARTI	0,5	0,5	0,5
4	CTTH	0,33	0,66	0,5
5	DEWA	0,33	0,4	0,33
6	ELSA	0,4	0,4	0,4
7	GEMS	0,5	0,5	0,5
8	HRUM	0,33	0,33	0,33
9	MBAP	0,33	0,33	0,33
10	MYOH	0,33	0,33	0,25
11	PTBA	0,37	0,37	0,33
12	RUIS	0,33	0,33	0,33
13	SMMT	0,6	0,33	0,33
14	SMRU	0,5	0,33	0,5
15	TOBA	0,66	0,4	0,4

Hasil Perhitungan Data Jumlah Dewan Komisaris

No.	Kode Emiten	2016	2017	2018
1	ADRO	5	5	5
2	ANTM	6	6	5
3	ARTI	2	2	2
4	CTTH	3	3	4
5	DEWA	6	5	6
6	ELSA	5	5	5
7	GEMS	6	6	6
8	HRUM	6	6	6
9	MBAP	3	3	3
10	MYOH	3	3	4
11	PTBA	8	8	6
12	RUIS	3	3	3
13	SMMT	5	3	3
14	SMRU	2	3	2
15	TOBA	3	5	5

Hasil Perhitungan Data Komite Audit

No.	Kode Emiten	2016	2017	2018
1	ADRO	3	3	3
2	ANTM	4	4	2
3	ARTI	2	3	3
4	CTTH	2	2	2
5	DEWA	3	3	3
6	ELSA	3	3	3
7	GEMS	3	3	3
8	HRUM	3	3	3
9	MBAP	3	3	3
10	MYOH	3	3	3
11	PTBA	2	2	2
12	RUIS	3	3	3
13	SMMT	3	3	3
14	SMRU	3	3	3
15	TOBA	3	3	3

Hasil Perhitungan Data Penghindaran Pajak (*Tax Avoidance*)

No.	Kode Emiten	2016	2017	2018
1	ADRO	0,38	0,42	0,42
2	ANTM	0,42	0,43	0,31
3	ARTI	0,07	0,44	0,92
4	CTTH	0,22	0,32	0,44
5	DEWA	0,8	0,74	0,77
6	ELSA	0,24	0,3	0,27
7	GEMS	0,28	0,28	0,26
8	HRUM	0,39	0,24	0,17
9	MBAP	0,5	0,29	0,36
10	MYOH	0,28	0,43	0,2
11	PTBA	0,01	0,18	0,31
12	RUIS	0,51	0,61	0,39
13	SMMT	0,31	0,25	0,03
14	SMRU	0,2	0,06	0,03
15	TOBA	0,44	0,22	0,3

Statistik Deskriptif

Statistics

		KINS	KDKI	JDK	KA	Y_Transform
N	Valid	45	45	45	45	45
	Missing	0	0	0	0	0
Mean		60,11	,4002	4,38	2,87	,5577
Median		63,00	,3700	5,00	3,00	,5568
Std. Deviation		14,141	,09384	1,614	,457	,18114
Variance		199,965	,009	2,604	,209	,033
Minimum		35	,25	2	2	,10
Maximum		89	,66	8	4	,96
Sum		2705	18,01	197	129	25,10

Frequency Table

KINS

	Frequency	Percent	Valid Percent	Cumulative Percent

Valid	35	2	4,4	4,4	4,4
	38	1	2,2	2,2	6,7
	41	3	6,7	6,7	13,3
	42	1	2,2	2,2	15,6
	44	3	6,7	6,7	22,2
	47	1	2,2	2,2	24,4
	49	1	2,2	2,2	26,7
	50	1	2,2	2,2	28,9
	52	2	4,4	4,4	33,3
	53	1	2,2	2,2	35,6
	57	1	2,2	2,2	37,8
	59	1	2,2	2,2	40,0
	60	4	8,9	8,9	48,9
	63	2	4,4	4,4	53,3
	64	3	6,7	6,7	60,0
	65	3	6,7	6,7	66,7
	67	3	6,7	6,7	73,3
	71	1	2,2	2,2	75,6
	72	1	2,2	2,2	77,8
	73	3	6,7	6,7	84,4
	74	2	4,4	4,4	88,9
	77	1	2,2	2,2	91,1
	79	1	2,2	2,2	93,3
	83	1	2,2	2,2	95,6
	89	2	4,4	4,4	100,0
Total		45	100,0	100,0	

KDKI

		Frequency	Percent	Valid Percent	Cumulative Percent
Valid	,25	1	2,2	2,2	2,2
	,33	20	44,4	44,4	46,7
	,37	2	4,4	4,4	51,1
	,40	10	22,2	22,2	73,3
	,50	9	20,0	20,0	93,3
	,60	1	2,2	2,2	95,6
	,66	2	4,4	4,4	100,0
	Total	45	100,0	100,0	

JDK

		Frequency	Percent	Valid Percent	Cumulative Percent
Valid	2	5	11,1	11,1	11,1
	3	14	31,1	31,1	42,2
	4	2	4,4	4,4	46,7
	5	11	24,4	24,4	71,1
	6	11	24,4	24,4	95,6
	8	2	4,4	4,4	100,0
	Total	45	100,0	100,0	

KA

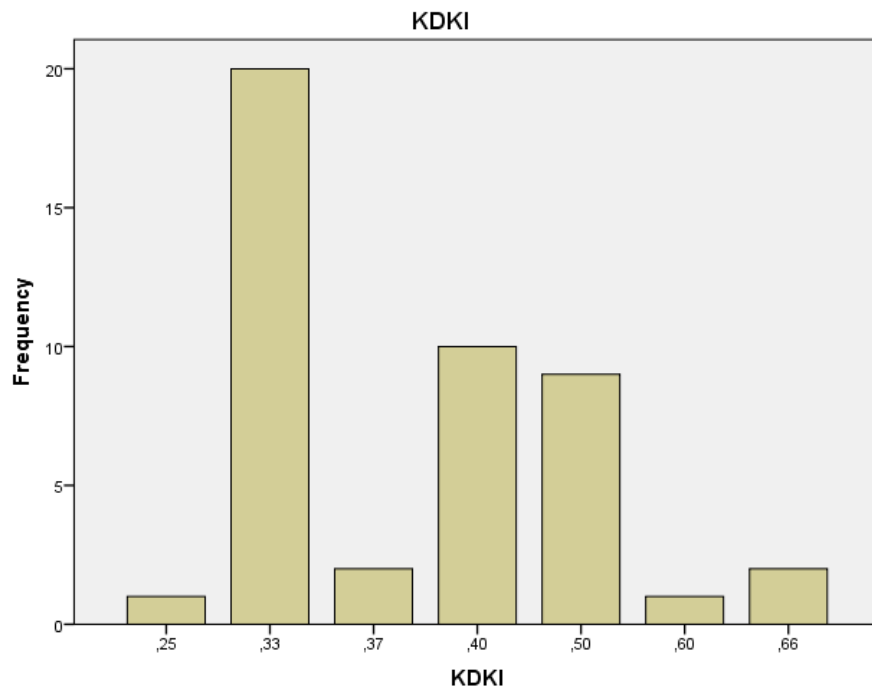
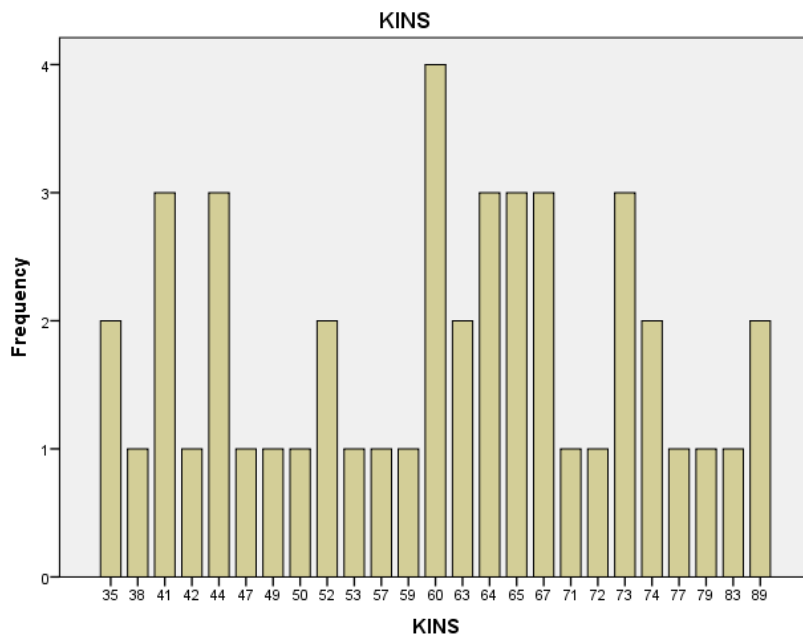
		Frequency	Percent	Valid Percent	Cumulative Percent
Valid	2	8	17,8	17,8	17,8
	3	35	77,8	77,8	95,6
	4	2	4,4	4,4	100,0
	Total	45	100,0	100,0	

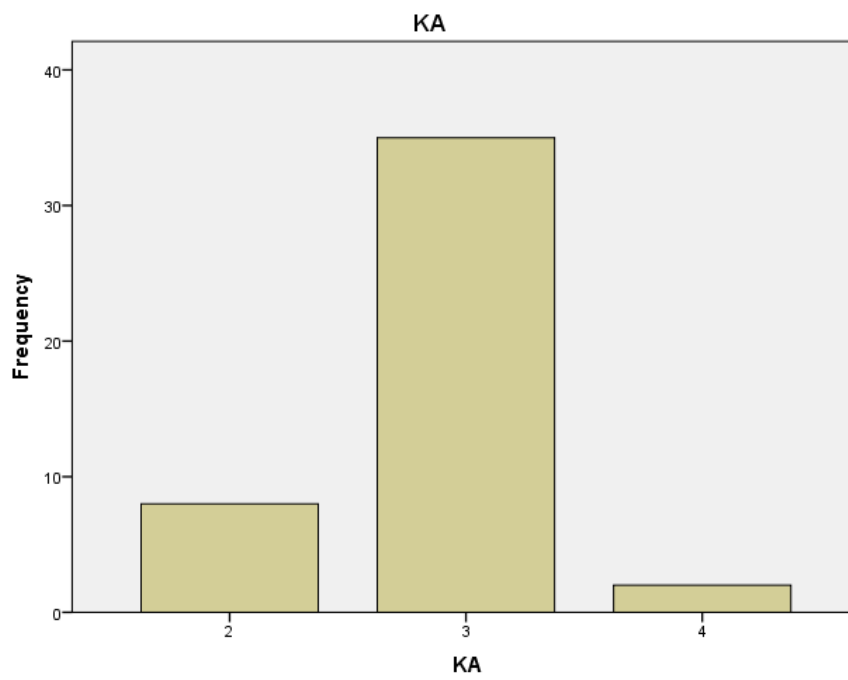
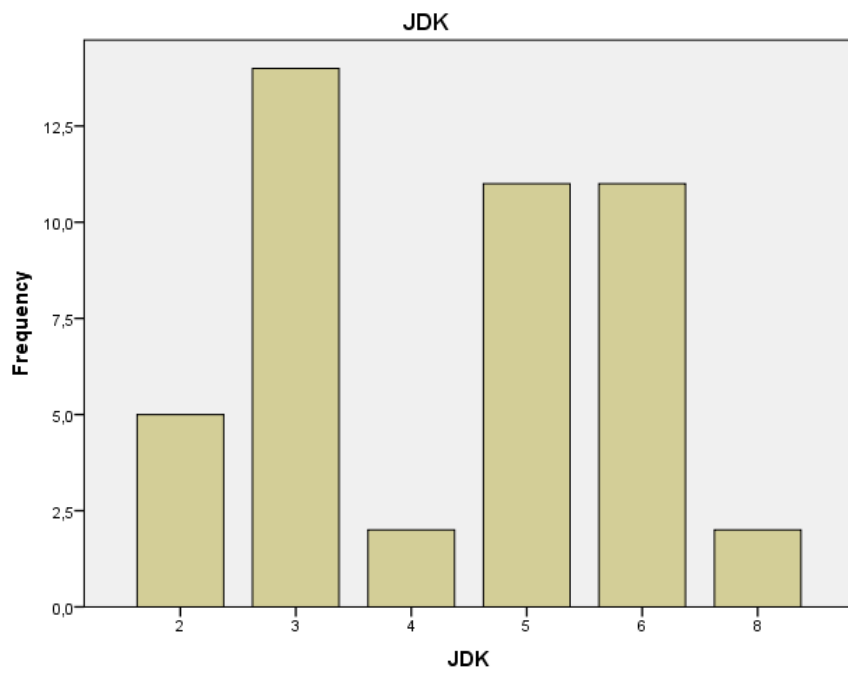
Y_Transform

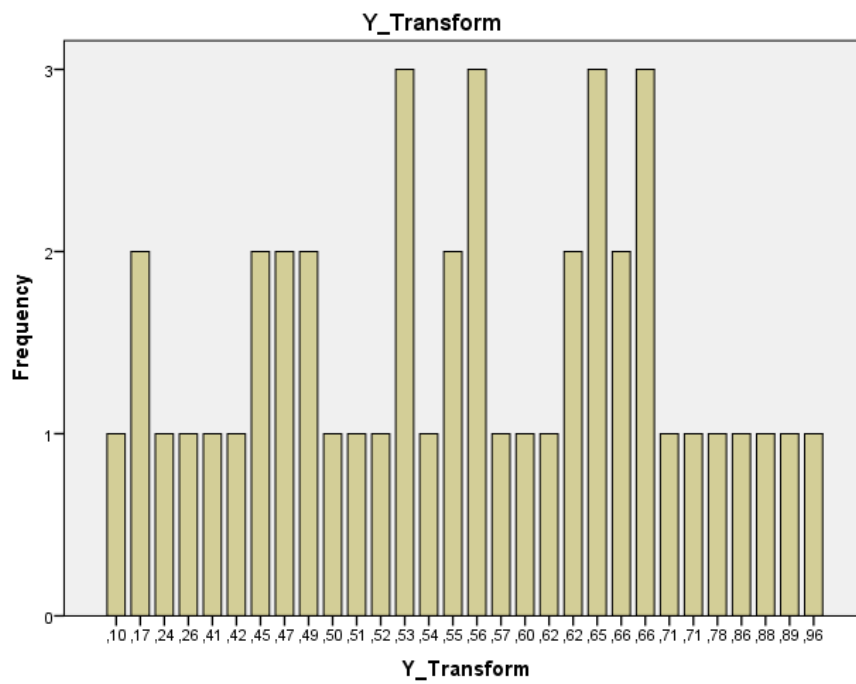
		Frequency	Percent	Valid Percent	Cumulative Percent
Valid	,10	1	2,2	2,2	2,2
	,17	2	4,4	4,4	6,7
	,24	1	2,2	2,2	8,9
	,26	1	2,2	2,2	11,1
	,41	1	2,2	2,2	13,3
	,42	1	2,2	2,2	15,6
	,45	2	4,4	4,4	20,0
	,47	2	4,4	4,4	24,4
	,49	2	4,4	4,4	28,9
	,50	1	2,2	2,2	31,1
	,51	1	2,2	2,2	33,3
	,52	1	2,2	2,2	35,6
	,53	3	6,7	6,7	42,2
	,54	1	2,2	2,2	44,4
	,55	2	4,4	4,4	48,9
	,56	3	6,7	6,7	55,6

,57	1	2,2	2,2	57,8
,60	1	2,2	2,2	60,0
,62	1	2,2	2,2	62,2
,62	2	4,4	4,4	66,7
,65	3	6,7	6,7	73,3
,66	2	4,4	4,4	77,8
,66	3	6,7	6,7	84,4
,71	1	2,2	2,2	86,7
,71	1	2,2	2,2	88,9
,78	1	2,2	2,2	91,1
,86	1	2,2	2,2	93,3
,88	1	2,2	2,2	95,6
,89	1	2,2	2,2	97,8
,96	1	2,2	2,2	100,0
Total	45	100,0	100,0	

Bar Chart







REGRESSION

/MISSING LISTWISE

/STATISTICS COEFF OUTS R ANOVA

/CRITERIA=PIN(.05) POUT(.10)

/NOORIGIN

/DEPENDENT Y_TRANSFORM

/METHOD=ENTER X1 X2 x3 x4

/RESIDUALS HISTOGRAM(ZRESID) NORMPROB(ZRESID)

/SAVE RESID.

Regression

Notes

Output Created		20-MAY-2020 11:48:34
Comments		
Input	Active Dataset	DataSet1
	Filter	<none>
	Weight	<none>
	Split File	<none>
	N of Rows in Working Data File	45
Missing Value Handling	Definition of Missing	User-defined missing values are treated as missing.
	Cases Used	Statistics are based on cases with no missing values for any variable used.
Syntax	REGRESSION /MISSING LISTWISE /STATISTICS COEFF OUTS R ANOVA /CRITERIA=PIN(.05) POUT(.10) /NOORIGIN /DEPENDENT Y_TRANSFORM /METHOD=ENTER X1 X2 x3 x4 /RESIDUALS HISTOGRAM(ZRESID) NORMPROB(ZRESID) /SAVE RESID.	
Resources	Processor Time	00:00:00,88
	Elapsed Time	00:00:01,16

	Memory Required	2308 bytes
	Additional Memory Required for Residual Plots	632 bytes
Variables Created or Modified	RES_1	Unstandardized Residual

Variables Entered/Removed^a

Model	Variables Entered	Variables Removed	Method
1	KA, KINS, KDKI, JDK ^b		Enter

a. Dependent Variable: Y_TRANSFORM

b. All requested variables entered.

Model Summary^b

Model	R	R Square	Adjusted R Square	Std. Error of the Estimate
1	,388 ^a	,150	,065	,17512

a. Predictors: (Constant), KA, KINS, KDKI, JDK

b. Dependent Variable: Y_TRANSFORM

ANOVA^a

Model		Sum of Squares	df	Mean Square	F	Sig.
1	Regression	,217	4	,054	1,769	,154 ^b
	Residual	1,227	40	,031		

Total	1,444	44		
-------	-------	----	--	--

a. Dependent Variable: Y_TRANSFORM

b. Predictors: (Constant), KA, KINS, KDKI, JDK

Coefficients^a

Model		Unstandardized Coefficients		Standardized Coefficients	t	Sig.
		B	Std. Error	Beta		
1	(Constant)	,347	,270		1,287	,206
	KINS	-,004	,002	-,277	-1,735	,091
	KDKI	,084	,294	,044	,287	,776
	JDK	,012	,018	,107	,662	,511
	KA	,118	,059	,297	1,990	,053

a. Dependent Variable: Y_TRANSFORM

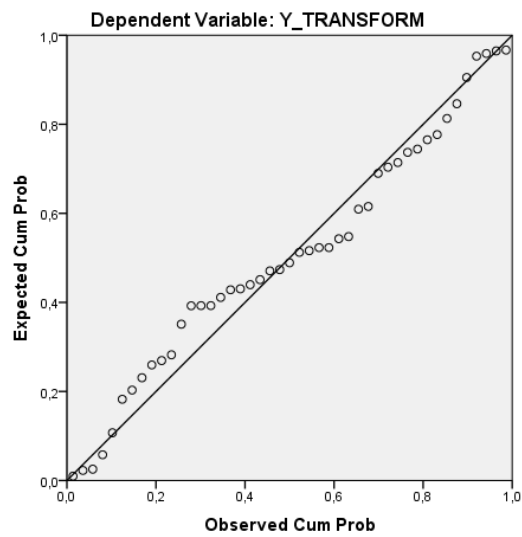
Residuals Statistics^a

	Minimum	Maximum	Mean	Std. Deviation	N
Predicted Value	,4235	,6874	,5577	,07023	45
Residual	-,40886	,32128	,00000	,16697	45
Std. Predicted Value	-1,911	1,847	,000	1,000	45
Std. Residual	-2,335	1,835	,000	,953	45

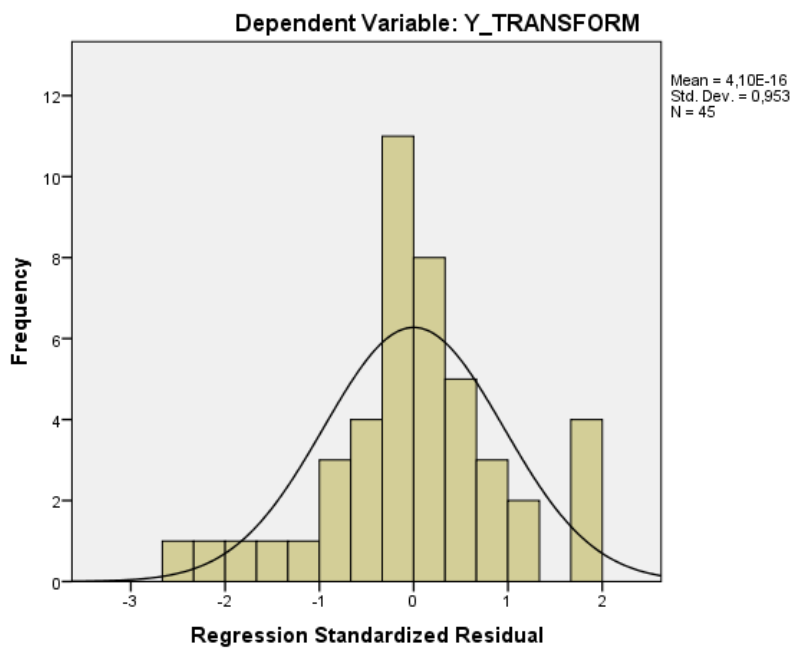
a. Dependent Variable: Y_TRANSFORM

Charts

Normal P-P Plot of Regression Standardized Residual



Histogram



NPAR TESTS

/K-S (NORMAL) =RES_1

/MISSING ANALYSIS.

NPar Tests

Notes

Output Created		20-MAY-2020 11:50:02
Comments		
Input	Active Dataset	DataSet1
	Filter	<none>
	Weight	<none>
	Split File	<none>
	N of Rows in Working Data File	45
Missing Value Handling	Definition of Missing	User-defined missing values are treated as missing.
	Cases Used	Statistics for each test are based on all cases with valid data for the variable(s) used in that test.

Syntax		NPART TESTS /K-S(NORMAL)=RES_1 /MISSING ANALYSIS.
Resources	Processor Time	00:00:00,03
	Elapsed Time	00:00:00,02
	Number of Cases Allowed ^a	196608

a. Based on availability of workspace memory.

One-Sample Kolmogorov-Smirnov Test

		Unstandardized Residual
N		45
Normal Parameters ^{a,b}	Mean	,0000000
	Std. Deviation	,16696936
Most Extreme Differences	Absolute	,121
	Positive	,094
	Negative	-,121
Test Statistic		,121
Asymp. Sig. (2-tailed)		,098 ^c

a. Test distribution is Normal.

b. Calculated from data.

c. Lilliefors Significance Correction.

REGRESSION

/MISSING LISTWISE

/STATISTICS BCOV COLLIN TOL

/CRITERIA=PIN(.05) POUT(.10)

```

/NOORIGIN

/DEPENDENT Y_TRANSFORM

/METHOD=ENTER X1 X2 x3 x4.

```

Regression

Notes

Output Created	20-MAY-2020 11:51:45	
Comments		
Input	Active Dataset	DataSet1
	Filter	<none>
	Weight	<none>
	Split File	<none>
	N of Rows in Working Data File	45
Missing Value Handling	Definition of Missing	User-defined missing values are treated as missing.
	Cases Used	Statistics are based on cases with no missing values for any variable used.

Syntax		REGRESSION /MISSING LISTWISE /STATISTICS BCOV COLLIN TOL /CRITERIA=PIN(.05) POUT(.10) /NOORIGIN /DEPENDENT Y_TRANSFORM /METHOD=ENTER X1 X2 x3 x4.
Resources	Processor Time	00:00:00,05
	Elapsed Time	00:00:00,06
	Memory Required	2308 bytes
	Additional Memory Required for Residual Plots	0 bytes

Variables Entered/Removed^a

Model	Variables Entered	Variables Removed	Method
1	KA, KINS, KDKI, JDK ^b		Enter

a. Dependent Variable: Y_TRANSFORM

b. All requested variables entered.

Coefficients^a

Model		Collinearity Statistics	
		Tolerance	VIF
1	KINS	,835	1,198
	KDKI	,915	1,093

JDK	,817	1,224
KA	,951	1,051

a. Dependent Variable: Y_TRANSFORM

Coefficient Correlations^a

Model			KA	KINS	KDKI	JDK
1	Correlations	KA	1,000	,013	,220	,055
		KINS	,013	1,000	,062	-,387
		KDKI	,220	,062	1,000	,156
		JDK	,055	-,387	,156	1,000
	Covariances	KA	,004	1,531E-6	,004	5,853E-5
		KINS	1,531E-6	4,175E-6	3,721E-5	-1,431E-5
		KDKI	,004	3,721E-5	,086	,001
		JDK	5,853E-5	-1,431E-5	,001	,000

a. Dependent Variable: Y_TRANSFORM

REGRESSION

/MISSING LISTWISE

/STATISTICS COEFF OUTS R ANOVA

/CRITERIA=PIN(.05) POUT(.10)

/NOORIGIN

/DEPENDENT Y_TRANSFORM

/METHOD=ENTER X1 X2 x3 x4

/SCATTERPLOT= (*SRESID , *ZPRED) .

Collinearity Diagnostics^a

Model	Dimension	Eigenvalue	Condition Index	Variance Proportions				
				(Constant)	KINS	KDKI	JDK	KA
1	1	4,804	1,000	,00	,00	,00	,00	,00
	2	,109	6,643	,00	,01	,12	,55	,01
	3	,045	10,303	,00	,17	,45	,29	,12
	4	,035	11,711	,01	,71	,04	,12	,22
	5	,007	26,396	,99	,11	,39	,03	,66

a. Dependent Variable: Y_TRANSFORM

Regression

Notes

Output Created	20-MAY-2020 11:55:00	
Comments		
Input	Active Dataset	DataSet1
	Filter	<none>
	Weight	<none>
	Split File	<none>
	N of Rows in Working Data File	45

Missing Value Handling	Definition of Missing	User-defined missing values are treated as missing.
	Cases Used	Statistics are based on cases with no missing values for any variable used.
Syntax		REGRESSION /MISSING LISTWISE /STATISTICS COEFF OUTS R ANOVA /CRITERIA=PIN(.05) POUT(.10) /NOORIGIN /DEPENDENT Y_TRANSFORM /METHOD=ENTER X1 X2 x3 x4 /SCATTERPLOT=(*SRESID ,*ZPRED).
Resources	Processor Time	00:00:00,39
	Elapsed Time	00:00:00,45
	Memory Required	2324 bytes
	Additional Memory Required for Residual Plots	216 bytes

Variables Entered/Removed^a

Model	Variables Entered	Variables Removed	Method
1	KA, KINS, KDKI, JDK ^b		Enter

a. Dependent Variable: Y_TRANSFORM

b. All requested variables entered.

Model Summary^b

Model	R	R Square	Adjusted R Square	Std. Error of the Estimate
1	,388 ^a	,150	,065	,17512

a. Predictors: (Constant), KA, KINS, KDKI, JDK

b. Dependent Variable: Y_TRANSFORM

ANOVA^a

Model		Sum of Squares	df	Mean Square	F	Sig.
1	Regression	,217	4	,054	1,769	,154 ^b
	Residual	1,227	40	,031		
	Total	1,444	44			

a. Dependent Variable: Y_TRANSFORM

b. Predictors: (Constant), KA, KINS, KDKI, JDK

Coefficients^a

Model	Unstandardized Coefficients		Standardized Coefficients	t	Sig.
	B	Std. Error	Beta		

1	(Constant)	,347	,270		1,287	,206
	KINS	-,004	,002	-,277	-1,735	,091
	KDKI	,084	,294	,044	,287	,776
	JDK	,012	,018	,107	,662	,511
	KA	,118	,059	,297	1,990	,053

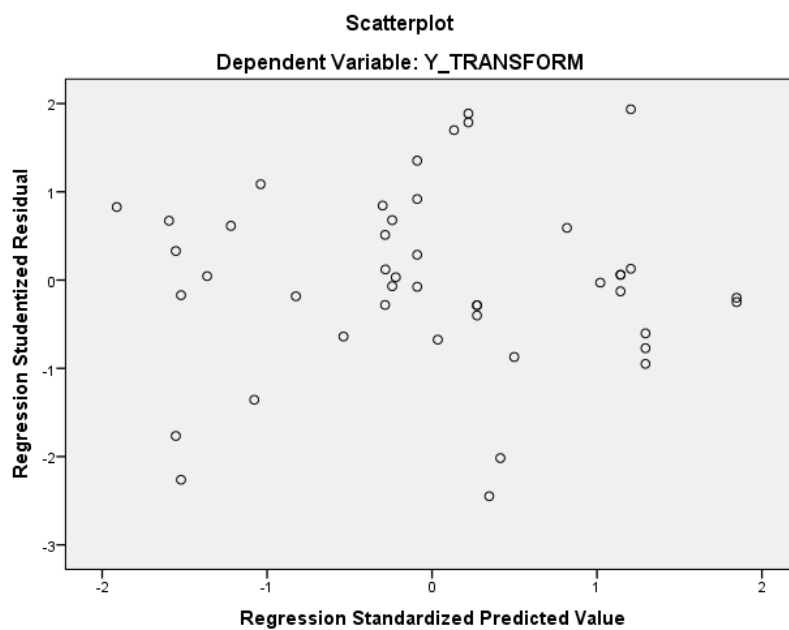
a. Dependent Variable: Y_TRANSFORM

Residuals Statistics^a

	Minimum	Maximum	Mean	Std. Deviation	N
Predicted Value	,4235	,6874	,5577	,07023	45
Std. Predicted Value	-1,911	1,847	,000	1,000	45
Standard Error of Predicted Value	,030	,090	,056	,015	45
Adjusted Predicted Value	,3993	,6965	,5598	,07216	45
Residual	-,40886	,32128	,00000	,16697	45
Std. Residual	-2,335	1,835	,000	,953	45
Stud. Residual	-2,449	1,935	-,006	1,011	45
Deleted Residual	-,44971	,36238	-,00209	,18830	45
Stud. Deleted Residual	-2,622	2,007	-,010	1,043	45
Mahal. Distance	,278	10,705	3,911	2,647	45
Cook's Distance	,000	,283	,026	,052	45
Centered Leverage Value	,006	,243	,089	,060	45

a. Dependent Variable: Y_TRANSFORM

Charts



```
COMPUTE ABRESID=ABS (RES_1) .
```

```
EXECUTE .
```

```
REGRESSION
```

```
  /MISSING LISTWISE
```

```
  /STATISTICS COEFF OUTS R ANOVA
```

```
  /CRITERIA=PIN (.05) POUT (.10)
```

```
  /NOORIGIN
```

```
  /DEPENDENT Y_TRANSFORM
```

```
/METHOD=ENTER X1 X2 x3 x4
```

```
/SCATTERPLOT=(*SRESID ,*ZPRED) .
```

Regression

Notes

Output Created		20-MAY-2020 11:59:28
Comments		
Input	Active Dataset	DataSet1
	Filter	<none>
	Weight	<none>
	Split File	<none>
	N of Rows in Working Data File	45
Missing Value Handling	Definition of Missing	User-defined missing values are treated as missing.
	Cases Used	Statistics are based on cases with no missing values for any variable used.
Syntax	<pre> REGRESSION /MISSING LISTWISE /STATISTICS COEFF OUTS R ANOVA /CRITERIA=PIN(.05) POUT(.10) /NOORIGIN /DEPENDENT Y_TRANSFORM /METHOD=ENTER X1 X2 x3 x4 /SCATTERPLOT=(*SRESID ,*ZPRED). </pre>	
Resources	Processor Time	00:00:00,39
	Elapsed Time	00:00:00,52
	Memory Required	2348 bytes
	Additional Memory Required for Residual Plots	216 bytes

Variables Entered/Removed^a

Model	Variables Entered	Variables Removed	Method
1	KA, KINS, KDKI, JDK ^b		Enter

a. Dependent Variable: Y_TRANSFORM

b. All requested variables entered.

Model Summary^b

Model	R	R Square	Adjusted R Square	Std. Error of the Estimate
1	,388 ^a	,150	,065	,17512

a. Predictors: (Constant), KA, KINS, KDKI, JDK

b. Dependent Variable: Y_TRANSFORM

ANOVA^a

Model		Sum of Squares	df	Mean Square	F	Sig.
1	Regression	,217	4	,054	1,769	,154 ^b
	Residual	1,227	40	,031		
	Total	1,444	44			

a. Dependent Variable: Y_TRANSFORM

b. Predictors: (Constant), KA, KINS, KDKI, JDK

Coefficients^a

Model		Unstandardized Coefficients		Standardized Coefficients	t	Sig.
		B	Std. Error	Beta		
1	(Constant)	,347	,270		1,287	,206
	KINS	-,004	,002	-,277	-1,735	,091
	KDKI	,084	,294	,044	,287	,776
	JDK	,012	,018	,107	,662	,511
	KA	,118	,059	,297	1,990	,053

a. Dependent Variable: Y_TRANSFORM

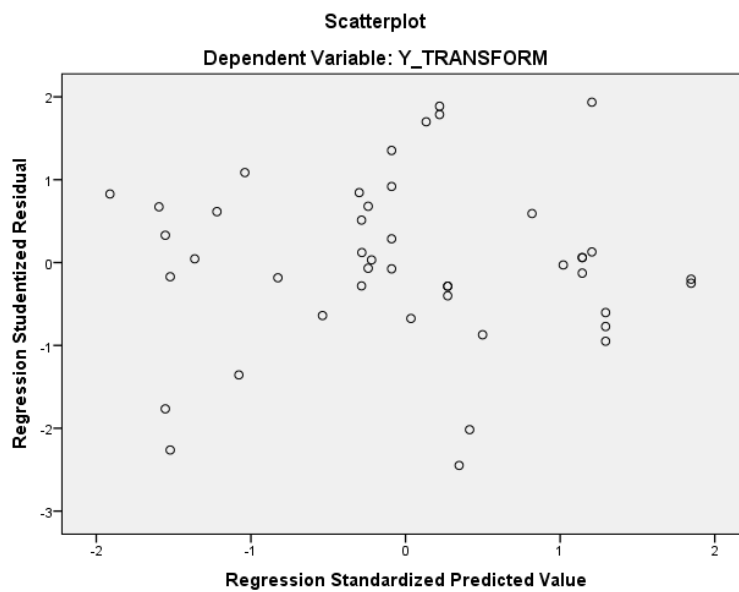
Residuals Statistics^a

	Minimum	Maximum	Mean	Std. Deviation	N
Predicted Value	,4235	,6874	,5577	,07023	45
Std. Predicted Value	-1,911	1,847	,000	1,000	45
Standard Error of Predicted Value	,030	,090	,056	,015	45
Adjusted Predicted Value	,3993	,6965	,5598	,07216	45
Residual	-,40886	,32128	,00000	,16697	45
Std. Residual	-2,335	1,835	,000	,953	45
Stud. Residual	-2,449	1,935	-,006	1,011	45
Deleted Residual	-,44971	,36238	-,00209	,18830	45

Stud. Deleted Residual	-2,622	2,007	-,010	1,043	45
Mahal. Distance	,278	10,705	3,911	2,647	45
Cook's Distance	,000	,283	,026	,052	45
Centered Leverage Value	,006	,243	,089	,060	45

a. Dependent Variable: Y_TRANSFORM

Charts



REGRESSION

/MISSING LISTWISE


```

/STATISTICS COEFF OUTS R ANOVA
/CRITERIA=PIN(.05) POUT(.10)
/NOORIGIN
/DEPENDENT ABRESID
/METHOD=ENTER X1 X2 x3 x4
/SCATTERPLOT=( *SRESID , *ZPRED) .

```

Regression

Notes

Output Created	20-MAY-2020 12:01:04	
Comments		
Input	Active Dataset	DataSet1
	Filter	<none>
	Weight	<none>
	Split File	<none>
	N of Rows in Working Data File	45
Missing Value Handling	Definition of Missing	User-defined missing values are treated as missing.
	Cases Used	Statistics are based on cases with no missing values for any variable used.

Syntax		REGRESSION /MISSING LISTWISE /STATISTICS COEFF OUTS R ANOVA /CRITERIA=PIN(.05) POUT(.10) /NOORIGIN /DEPENDENT ABRESID /METHOD=ENTER X1 X2 x3 x4 /SCATTERPLOT=(*SRESID ,*ZPRED).
Resources	Processor Time	00:00:00,49
	Elapsed Time	00:00:01,13
	Memory Required	2348 bytes
	Additional Memory Required for Residual Plots	216 bytes

Variables Entered/Removed^a

Model	Variables Entered	Variables Removed	Method
1	KA, KINS, KDKI, JDK ^b		Enter

a. Dependent Variable: ABRESID

b. All requested variables entered.

Model Summary^b

Model	R	R Square	Adjusted R Square	Std. Error of the Estimate
1	,193 ^a	,037	-,059	,11612

a. Predictors: (Constant), KA, KINS, KDKI, JDK

b. Dependent Variable: ABRESID

ANOVA^a

Model		Sum of Squares	Df	Mean Square	F	Sig.
1	Regression	,021	4	,005	,389	,816 ^b
	Residual	,539	40	,013		
	Total	,560	44			

a. Dependent Variable: ABRESID

b. Predictors: (Constant), KA, KINS, KDKI, JDK

Coefficients^a

Model		Unstandardized Coefficients		Standardized Coefficients	t	Sig.
		B	Std. Error	Beta		
1	(Constant)	,289	,179		1,617	,114
	KINS	4,010E-5	,001	,005	,030	,977
	KDKI	-,051	,195	-,042	-,261	,796

JDK	-,010	,012	-,137	-,800	,428
KA	-,037	,039	-,152	-,954	,346

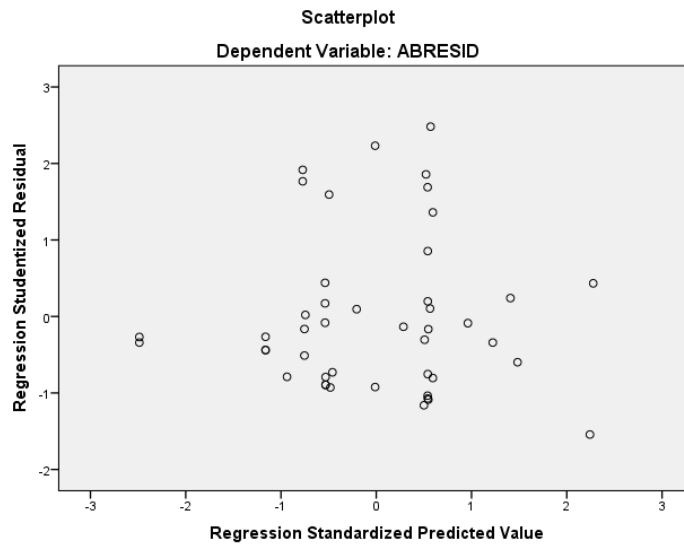
a. Dependent Variable: ABRESID

Residuals Statistics^a

	Minimum	Maximum	Mean	Std. Deviation	N
Predicted Value	,0674	,1714	,1217	,02182	45
Std. Predicted Value	-2,487	2,277	,000	1,000	45
Standard Error of Predicted Value	,020	,060	,037	,010	45
Adjusted Predicted Value	,0581	,2036	,1222	,02717	45
Residual	-,16350	,27473	,00000	,11071	45
Std. Residual	-1,408	2,366	,000	,953	45
Stud. Residual	-1,544	2,481	-,002	1,010	45
Deleted Residual	-,19647	,30218	-,00053	,12456	45
Stud. Deleted Residual	-1,572	2,664	,011	1,038	45
Mahal. Distance	,278	10,705	3,911	2,647	45
Cook's Distance	,000	,275	,026	,048	45
Centered Leverage Value	,006	,243	,089	,060	45

a. Dependent Variable: ABRESID

Charts



REGRESSION

/MISSING LISTWISE

/STATISTICS COEFF OUTS R ANOVA

/CRITERIA=PIN(.05) POUT(.10)

/NOORIGIN

/DEPENDENT Y_TRANSFORM

/METHOD=ENTER X1 X2 x3 x4

/SCATTERPLOT=(*SRESID , *ZPRED)

/RESIDUALS DURBIN.

Regression

Notes

Output Created	20-MAY-2020 12:03:35	
Comments		
Input	Active Dataset	DataSet1
	Filter	<none>
	Weight	<none>
	Split File	<none>
	N of Rows in Working Data File	45
Missing Value Handling	Definition of Missing	User-defined missing values are treated as missing.
	Cases Used	Statistics are based on cases with no missing values for any variable used.
Syntax	<pre> REGRESSION /MISSING LISTWISE /STATISTICS COEFF OUTS R ANOVA /CRITERIA=PIN(.05) POUT(.10) /NOORIGIN /DEPENDENT Y_TRANSFORM /METHOD=ENTER X1 X2 x3 x4 /SCATTERPLOT=(*SRESID ,*ZPRED) /RESIDUALS DURBIN. </pre>	
Resources	Processor Time	00:00:00,47
	Elapsed Time	00:00:00,80
	Memory Required	2348 bytes

Additional Memory Required for Residual Plots	216 bytes
--	-----------

Variables Entered/Removed^a

Model	Variables Entered	Variables Removed	Method
1	KA, KINS, KDKI, JDK ^b		Enter

a. Dependent Variable: Y_TRANSFORM

b. All requested variables entered.

Model Summary^b

Model	R	R Square	Adjusted R Square	Std. Error of the Estimate	Durbin-Watson
1	,388 ^a	,150	,065	,17512	1,779

a. Predictors: (Constant), KA, KINS, KDKI, JDK

b. Dependent Variable: Y_TRANSFORM

ANOVA^a

Model		Sum of Squares	Df	Mean Square	F	Sig.
1	Regression	,217	4	,054	1,769	,154 ^b
	Residual	1,227	40	,031		
	Total	1,444	44			

a. Dependent Variable: Y_TRANSFORM

b. Predictors: (Constant), KA, KINS, KDKI, JDK

Coefficients^a

Model		Unstandardized Coefficients		Standardized Coefficients	t	Sig.
		B	Std. Error	Beta		
1	(Constant)	,347	,270		1,287	,206
	KINS	-,004	,002	-,277	-1,735	,091
	KDKI	,084	,294	,044	,287	,776
	JDK	,012	,018	,107	,662	,511
	KA	,118	,059	,297	1,990	,053

a. Dependent Variable: Y_TRANSFORM

Residuals Statistics^a

	Minimum	Maximum	Mean	Std. Deviation	N
Predicted Value	,4235	,6874	,5577	,07023	45
Std. Predicted Value	-1,911	1,847	,000	1,000	45
Standard Error of Predicted Value	,030	,090	,056	,015	45
Adjusted Predicted Value	,3993	,6965	,5598	,07216	45
Residual	-,40886	,32128	,00000	,16697	45
Std. Residual	-2,335	1,835	,000	,953	45
Stud. Residual	-2,449	1,935	-,006	1,011	45
Deleted Residual	-,44971	,36238	-,00209	,18830	45
Stud. Deleted Residual	-2,622	2,007	-,010	1,043	45

Mahal. Distance	,278	10,705	3,911	2,647	45
Cook's Distance	,000	,283	,026	,052	45
Centered Leverage Value	,006	,243	,089	,060	45

a. Dependent Variable: Y_TRANSFORM

Charts

