

CHAPTER IV

FINDINGS AND DISCUSSION

A. Findings

The research has been done at IAIN Antasari Banjarmasin. It is located on Jl. A. Yani KM. 4,5 Banjarmasin 70234. In this data presentation, the writer presents and describes the result of the on-field research that has been done in the the fifth semester students of English Department of IAIN Antasari Banjarmasin. The data are about the students' reading habit and translation ability.

To better understand about students about students' reading habit and translation ability, the writer conducted questionnaire and written test on 27th and 28th of November 2014 at classroom

1. The Description about Reading Habit and Translation Ability

a. Reading Habit (X).

The data of Reading Habit were collected by using questionnaire. It was conducted to 72 students of fifth semester students of English Department of IAIN Antasari Banjarmasin. The result of each students are presented in the following table :

Table 4.1 The scores of Reading Habit

No	Number of Student	Score of Reading Habit
1	1	74
2	2	61
3	3	86
4	4	59

5	5	72
6	6	65
7	7	53
8	8	76
9	9	46
10	10	85
11	11	52
12	12	79
13	13	84
14	14	61
15	15	75
16	16	83
17	17	85
18	18	62
19	19	79
20	20	54
21	21	82
22	22	56
23	23	71
24	24	84
25	25	69
26	26	72
27	27	47
28	28	71
29	29	62
30	30	85
31	31	48
32	32	75
33	33	49
34	34	66

35	35	76
36	36	38
37	37	83
38	38	63
39	39	76
40	40	49
41	41	58
42	42	51
43	43	64
44	44	57
45	45	75
46	46	77
47	47	82
48	48	65
49	49	81
50	50	81
51	51	43
52	52	73
53	53	68
54	54	58
55	55	86
56	56	74
57	57	55
58	58	63
59	59	73
60	60	84
61	61	77
62	62	67
63	63	74
64	64	68

65	65	82
66	66	78
67	67	56
68	68	64
69	69	76
70	70	85
71	71	66
72	72	79
Total		4953

Based on students' questionnaire result, it is found that the highest score is 86 and the lowest one is 38 in the scoring scale of 0 – 100. It was known that students' total score is 4953, then the median is 71.5, the mode is 76, and the mean of total score is:

$$M = \frac{\sum X}{N}$$

$$M = \frac{4953}{72}$$

$$M = 68.79$$

The frequency distribution of the scores of the students' reading habit with 7 length of interval and 7 numbers of classes and its histogram and polygon can be seen on the table and figures as follows:

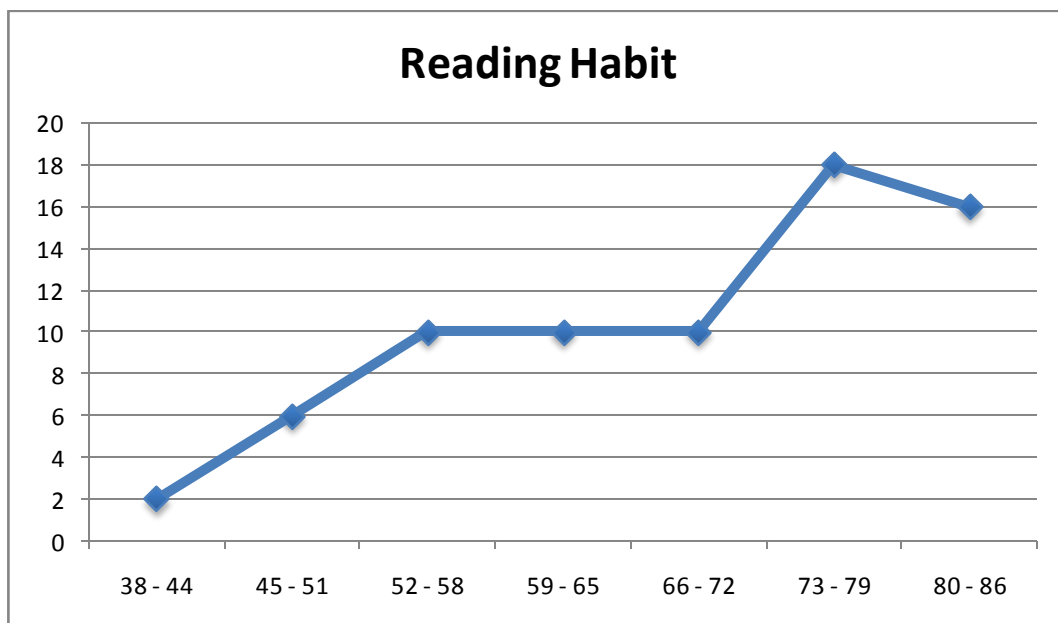
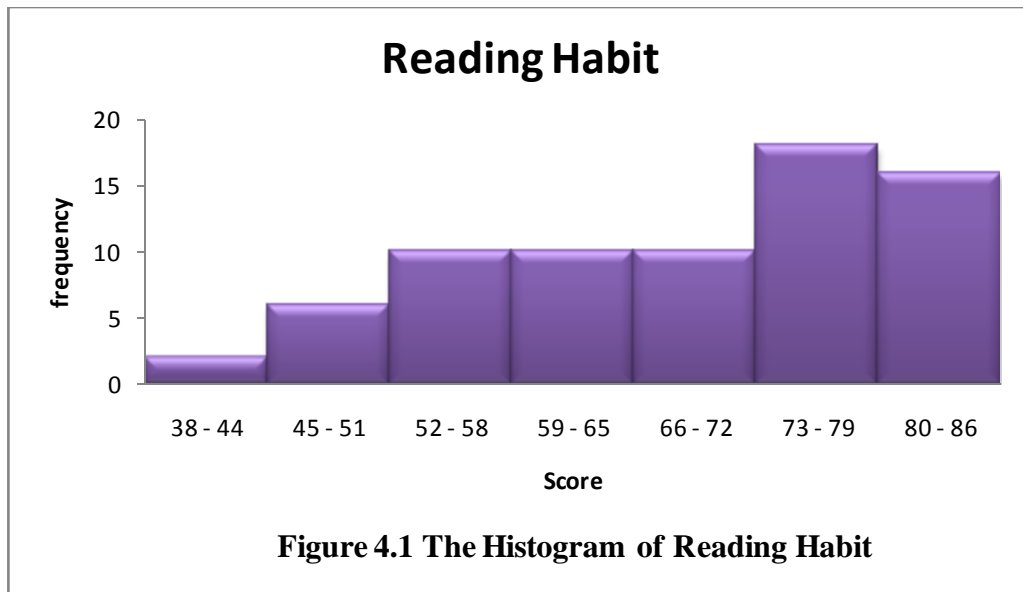
Table 4.2 The Data of Reading Habit

No	Classification	Result
1	The highest score	86
2	The lowest score	38

3	Score range (r)	$86 - 38 = 48$
4	Class number	$1 + (3.3) \log n$ $= 1 + (3.3) \log 72$ $= 1 + 3.3 (1.8573)$ $= 1 + 6.1292$ $= 7.1292 = 7$
5	Interval	$r/\text{class number}$ $= 48/7$ $= 6.8571 = 7$

Table 4.3 The Frequency Distribution of Reading Habit

Class Limits	Frequency	Percentage
38 - 44	2	2.78%
45 - 51	6	8.33%
52 - 58	10	13.89%
59 - 65	10	13.89%
66 - 72	10	13.89%
73 - 79	18	25%
80 - 86	16	22.22%
Total	72	100%



b. Translation Ability (Y)

The data of translation ability were collected by using test. It was also conducted to 72 students of fifth semester students of English Department of IAIN Antasari Banjarmasin. The test was in two parts, first the students were asked to

translate from English into Indonesian and second they were asked to translate from Indonesian into English. The result of each students are presented in the following table :

Table 4.4 The scores of Translation Ability

No	Number of Student	Score of Translation Ability
1	1	65
2	2	70
3	3	80
4	4	60
5	5	90
6	6	65
7	7	70
8	8	80
9	9	50
10	10	90
11	11	45
12	12	50
13	13	90
14	14	70
15	15	75
16	16	90
17	17	85
18	18	60
19	19	80
20	20	50
21	21	75
22	22	50
23	23	75
24	24	90

25	25	60
26	26	65
27	27	45
28	28	70
29	29	70
30	30	85
31	31	50
32	32	75
33	33	50
34	34	65
35	35	80
36	36	45
37	37	80
38	38	65
39	39	75
40	40	45
41	41	60
42	42	55
43	43	70
44	44	55
45	45	75
46	46	80
47	47	80
48	48	65
49	49	90
50	50	85
51	51	45
52	52	75
53	53	70
54	54	65

55	55	85
56	56	75
57	57	55
58	58	65
59	59	75
60	60	90
61	61	75
62	62	65
63	63	75
64	64	70
65	65	85
66	66	85
67	67	60
68	68	70
69	69	75
70	70	85
71	71	70
72	72	80
Total		5040

Based on students' test result of translation ability, it is found that the highest score is 90 and the lowest one is 45 in the scoring scale of 0 – 100. It was known that students' total score is 5040, then the median is 70, the mode is 75, and the mean of total score is:

$$M = \frac{\sum X}{N}$$

$$M = \frac{5040}{72}$$

M= 70

The frequency distribution of the scores of the students' reading habit with 6 length of interval and 7 numbers of classes and its histogram and polygon can be seen on the table and figures as follows:

Table 4.5 The Data of Translation Ability

No	Classification	Result
1	The highest score	90
2	The lowest score	45
3	Score range (r)	$90 - 45 = 45$
4	Class number	$1 + (3.3) \log n$ $= 1 + (3.3) \log 72$ $= 1 + 3.3 (1.8573)$ $= 1 + 6.1292$ $= 7.1292 = 7$
5	Interval	$r/\text{class number}$ $= 45/7$ $= 6.285 = 7$

Table 4.6 The Frequency Distribution of Translation ability

Class Limits	Frequency	Percentage
45 – 51	11	15.28%
52 – 57	3	4.17%
58 – 64	5	6.94%

65 – 71	19	26.39%
72 – 78	12	16.67%
79 – 85	15	20.83%
86 - 92	7	9.72%
Total	72	100%

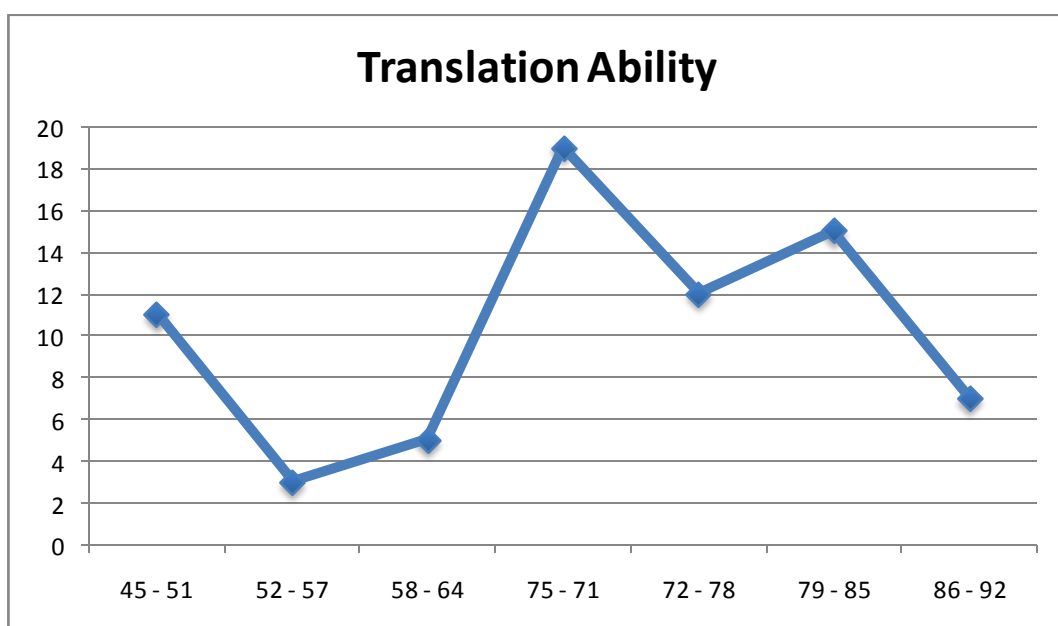
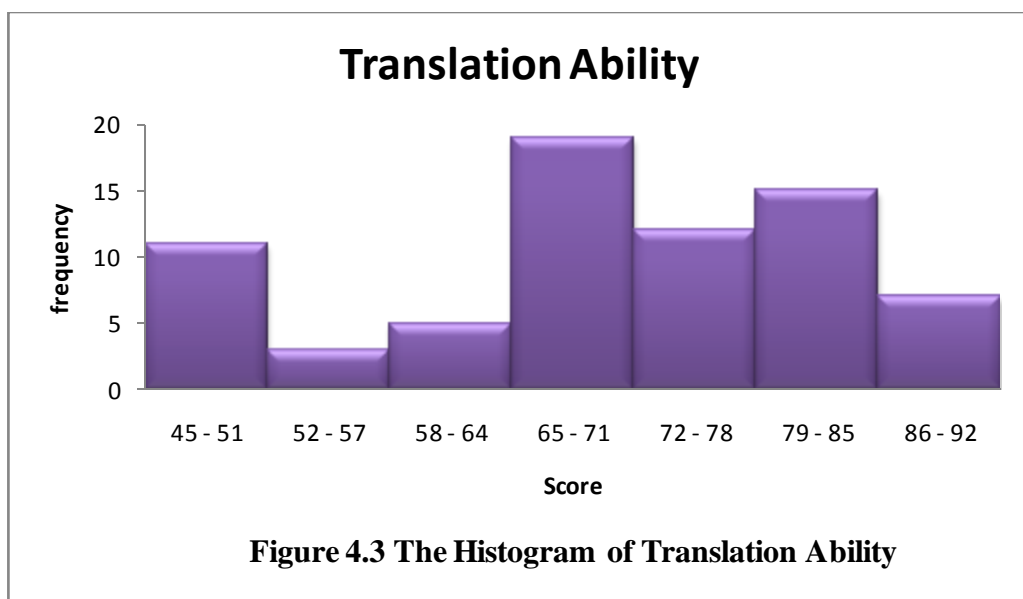


Figure 4.4 The polygon of Reading Habit

2. The Analysis of Data

It has been mentioned before, the data gained from the students' scores of questionnaire and test. The next step in this research is finding the XY , X^2 , and Y^2 of the data. They are seen in the following table:.

Table 4.7 Working Table of Data Analysis

No	X	Y	X^2	Y^2	XY
1	74	65	5476	4225	4810
2	61	70	3721	4900	4270
3	86	80	7396	6400	6880
4	59	60	3481	3600	3540
5	72	90	5184	8100	6480
6	65	65	4225	4225	4225
7	53	70	2809	4900	3710
8	76	80	5776	6400	6080
9	46	50	2116	2500	2300
10	85	90	7225	8100	7650
11	52	45	2704	2025	2340
12	79	50	6241	2500	3950
13	84	90	7056	8100	7560
14	61	70	3721	4900	4270
15	75	75	5625	5625	5625
16	83	90	6889	8100	7470
17	85	85	7225	7225	7225
18	62	60	3844	3600	3720
19	79	80	6241	6400	6320
20	54	50	2916	2500	2700
21	82	75	6724	5625	6150

22	56	50	3136	2500	2800
23	71	75	5041	5625	5325
24	84	90	7056	8100	7560
25	69	60	4761	3600	4140
26	72	65	5184	4225	4680
27	47	45	2209	2025	2115
28	71	70	5041	4900	4970
29	62	70	3844	4900	4340
30	85	85	7225	7225	7225
31	48	50	2304	2500	2400
32	75	75	5625	5625	5625
33	49	50	2401	2500	2450
34	66	65	4356	4225	4290
35	76	80	5776	6400	6080
36	38	45	1444	2025	1710
37	83	80	6889	6400	6640
38	63	65	3969	4225	4095
39	76	75	5776	5625	5700
40	49	45	2401	2025	2205
41	58	60	3364	3600	3480
42	51	55	2601	3025	2805
43	64	70	4096	4900	4480
44	57	55	3249	3025	3135
45	75	75	5625	5625	5625
46	77	80	5929	6400	6160
47	82	80	6724	6400	6560
48	65	65	4225	4225	4225
49	81	90	6561	8100	7290
50	81	85	6561	7225	6885
51	43	45	1849	2025	1935

52	73	75	5329	5625	5475
53	68	70	4624	4900	4760
54	58	65	3364	4225	3770
55	86	85	7396	7225	7310
56	74	75	5476	5625	5550
57	55	55	3025	3025	3025
58	63	65	3969	4225	4095
59	73	75	5329	5625	5475
60	84	90	7056	8100	7560
61	77	75	5929	5625	5775
62	67	65	4489	4225	4355
63	74	75	5476	5625	5550
64	68	70	4624	4900	4760
65	82	85	6724	7225	6970
66	78	85	6084	7225	6630
67	56	60	3136	3600	3360
68	64	70	4096	4900	4480
69	76	75	5776	5625	5700
70	85	85	7225	7225	7225
71	66	70	4356	4900	4620
72	79	80	6241	6400	6320
Total	4953	5040	351541	365200	356970

The next step is analyzing the data by using Pearson rough number correlation.

The formula is:

$$r_{xy} = \frac{N \sum XY - (\sum X)(\sum Y)}{\sqrt{\{N \sum X^2 - (\sum X)^2\} \{N \sum Y^2 - (\sum Y)^2\}}}$$

Where:

- r_{xy} : Coefficient correlation between correlated variables X and Y
 N : The total number of the students
 $\sum xy$: The amount of multiplication between variables X and Y
 X : The score of reading habit
 Y : The score of translation ability

The result is as follow:

$$N = 72$$

$$\sum X = 4953$$

$$\sum Y = 5040$$

$$\sum X^2 = 351541$$

$$\sum Y^2 = 365200$$

$$\sum XY = 356970$$

$$r_{xy} = \frac{N \sum XY - (\sum X)(\sum Y)}{\sqrt{[N \sum X^2 - (\sum X)^2][N \sum Y^2 - (\sum Y)^2]}}$$

$$r_{xy} = \frac{72 \cdot 356970 - (4953)(5040)}{\sqrt{[72 \cdot 351541 - (4953)^2][72 \cdot 365200 - (5040)^2]}}$$

$$r_{xy} = \frac{25701840 - 24963120}{\sqrt{[25310952 - 24532209][26294400 - 25401600]}}$$

$$r_{xy} = \frac{738720}{\sqrt{[778743][892800]}}$$

$$r_{xy} = \frac{738720}{\sqrt{695261750400}}$$

$$r_{xy} = \frac{738720}{833823.57270588}$$

$$r_{xy} = 0.8859428$$

$$r_{xy} = 0.886$$

This is the result of the calculation from the data derived from variable X and Y. After using Pearson product moment, the final result is $r_{xy} = 0.886$

B. Discussion

Based on the result of the calculation above, it is known that r_{xy} is 0.886. To test the hypothesis of the research there are two steps that the writer has performed, it can be known whether there is a significant correlation or not.

Firstly, the writer consulted to the table of product moment. Based on the result of statistic calculation, it indicates that r_{xy} is 0.886 with the degree of freedom ($df = N - nr$) $df = 72 - 2$ is 70. More detail about table of product moment can be seen in the appendix. Then found out that the “ r ” value for $df = 70$ is 0.232 for 5% significance degree and 0.302 for 1% significance degree. It is clear that $r_{xy} > r_t$.

$$r_{xy} = 0.886$$

$$r_t = 0.232 \text{ \& } 0.302$$

$$r_{xy} > r_t$$

The statistic hypothesis states:

If $r_o > r_t$ significance : there is correlation and H_a accepted

If $r_o < r_t$ non signification: there is no correlation and H_a is rejected H_o is accepted

The result of hypothesis is that r_{xy} is bigger than r_t , the hypothesis null (H_o) is denied and hypothesis alternative (H_a) is accepted. It means there is significant correlation between reading habit and translation ability

Secondly, in order to confirm the first step, the writer consulted to the table of standard classification of correlation degree below:

Table 4.8. Standard Categories of “r” Product Moment Value

The value of “r”				Interpretation
Pearson Product Moment (r_{xy})				
0,00 – 0,199	Very low	⇒		There is a correlation between variable X and variable Y, but the correlation is so very low that the correlation is disregarded, or, in other words, there is no correlation between variable X and variable Y.
0,200 – 0,399	Low	⇒		There is a low correlation between variable X and variable Y.
0,400 – 0,599	Moderate	⇒		There is a fair or moderate correlation between variable X and variable Y.
0,600 – 0,799	High	⇒		There is a strong correlation between variable X and variable Y.
0,800 – 1,00	Very high	⇒		There is a very strong correlation between variable X and variable Y.

From the table above, it is seen that the r_{xy} 0.886 means that the correlation between variable X and variable Y in this research is Very High level. It means there is a strong correlation between variable X and variable Y in this research.

Product Moment Correlation between variable X and variable Y that has been obtained is 0.886 ($r_{xy} > r_t$) and High level in standard classification of correlation. It means there is a strong correlation between variable X and variable Y in this research. It is increasingly proving that there is positive correlation between students' reading habit and translation ability of the fifth semester students of English Department of IAIN Antasari Banjarmasin Academic Year 2014/2015.