

## **CHAPTER IV**

### **DATA PRESENTATION AND ANALYSIS**

#### **A. General Description of Senior High School 1 Tamiang Layang**

##### **1. Brief History of Senior High School 1 Tamiang Layang**

Senior High School 1 Tamiang Layang is one of some favorite schools in Tamiang Layang. It is the only one Senior High School there and the distance with the other schools is very far. The location of Senior High School Tamiang Layang is on Street Nansarunai Number 35. This school was built on a vast land of 78.459,13 m<sup>2</sup>. This school was built on August 1, 1965 with No. SK.99/E/III-65-66.

As soon as this school was established in Tamiang Layang, it got status “state” school. The school has been led by two headmasters, the first headmaster was Drs. Argianto and now is leaded by Khoirul Anam, S.Pd.

The location of State Senior High School 1 Tamiang Layang is strategic enough, its area is around the center of town. The school also has good facilities that support teaching learning process in the school.

##### **2. Description about teachers, staff and students**

Senior High School 1 Tamiang Layang has 43 teachers including the headmaster and vice headmaster from the different educational background, there

are 445 students and 6 administration staff in Senior High School 1 Tamiang Layang. To know more closely about the teachers, staff and students' description, it can be seen in appendices.

### **3. Description about facilities**

Senior High School 1 Tamiang Layang has some facilities which support teaching and learning process in the class. The description about the facilities of Senior High School 1 Tamiang Layang can be seen in appendices.

### **B. Presentation of Data**

To get the data of students' mastery of past tense and their ability in expressing past activities in writing at Senior High School I Tamiang Layang in academic year 2010/2011, the writer has studied directly to the research location. Data X (Students' mastery of past tense) was acquired from grammar multiple choice test that had been performed at once for about 90 minutes. Meanwhile data Y (students' ability in writing past tense) was acquired from completion test and changing sentences into past tense. The result of both of the test can be seen in the next table.

Table 4.1 Students' Mastery of Past Tense

Students' Code Number	Students' Mastery of Past Tense (X)
1.	58
2.	60
3.	70
4.	70
5.	70
6.	58
7.	30
8.	46
9.	62
10.	60
11.	64
12.	64
13.	64
14.	64
15.	60
16.	60
17.	66
18.	50
19.	66
20.	38
21.	62
22.	46
23.	56
24.	50

25.	64
26.	50

Continuing Table

27.	54
28.	54
29.	54
30.	42
31.	44
32.	44
33.	38
34.	46
35.	74
36.	74
37.	70
38.	70
39.	80
40.	80
41.	80
N= 41	$\sum_x = 2412$

Table 4.2 Student' ability in writing past activities

Students' Code Number	Students' ability in writing past activities (Y)
1.	40
2.	60
3.	68
4.	68
5.	56

6.	40
7.	44
8.	32
9.	56

Continuing Table

10.	64
11.	52
12.	40
13.	56
14.	60
15.	56
16.	52
17.	60
18.	44
19.	44
20.	60
21.	60
22.	68
23.	60
24.	60
25.	52
26.	56
27.	54
28.	52
29.	52
30.	52
31.	52
32.	40

33.	48
34.	44
35.	68
36.	60
37.	64
38.	72

Continuing Table

39.	76
40.	72
41.	78
N= 41	$\Sigma y = 2292$

To know the students' level at the test, the writer classifies the data to 6 criteria, namely excellent, good, sufficient, low, very low and poor.

Table 4.3 Classification of Students' Level

Level	Sum of Students' mastery of past tense		Sum of Students' Ability in Writing	
	Excellent	3	7,32%	-
Good	7	17,07%	4	9,76%
Sufficient	13	31,71%	14	34,14%
Low	9	21,95%	13	31,71%
Very Low	6	14,63%	9	21,95%
Poor	3	7,32%	1	2,44%
<b>Total</b>	<b>41</b>	<b>100%</b>	<b>41</b>	<b>100%</b>

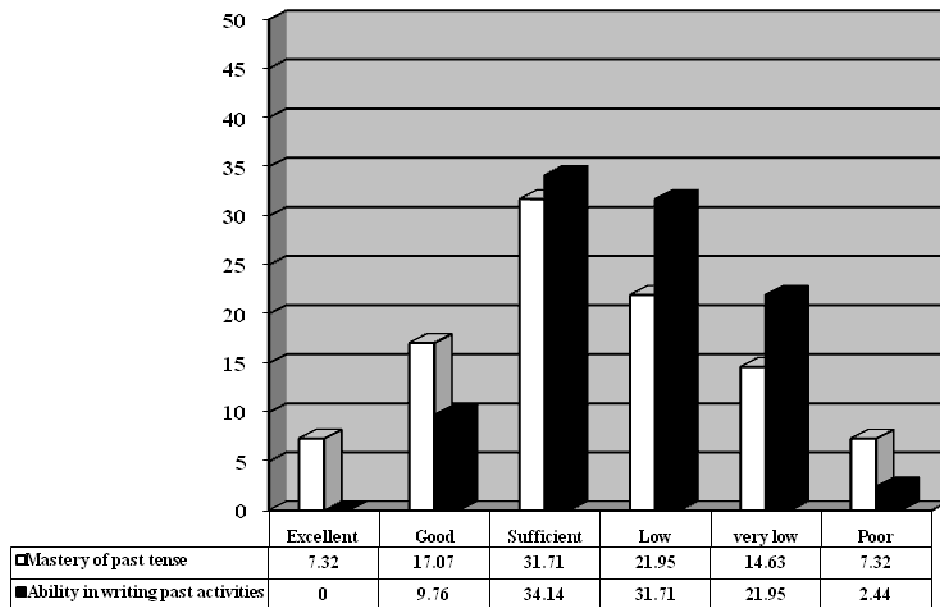
The table above shows the students' mastery of past tense. Most of students are in sufficient level 31,41% and 21,95% are in low level. Only 17,07% students is in good level, 14,63% in very low level and 7,32% in poor level. The students who get the excellent level are only 7,32%.

For students ability in expressing past activities in writing also can be seen. There are 9,76% students in good level, 34,14% in sufficient, 31,71% in low,

21,95% in very low and 2,44% in poor level. However, no student can reach excellent level.

This histogram below will help to describe the scores the students have.

### Classification of students' score



### C. Data Analysis

1. To define the degree of students' mastery of past tense and their ability in expressing past activities in writing.
  - a. From the data above, it can be defined the mean (M) of the students' score by using the formula below:



$$M_x: \frac{\sum X}{N}$$

$$M_y: \frac{\sum y}{N}$$

Thus, based on the table score, it can be known that:

$$\sum_x : 2412$$

$$\sum_y : 2292$$

$$M_x = \frac{2412}{41} = 58,83$$

$$M_Y = \frac{2292}{41} = 55,90$$

After the mean of data X and Y are defined, the writer makes working table as below:

Table 4.4 Working Table of Analysis Data

Students' Code Number	X	Y	x	y	xy	x <sup>2</sup>	y <sup>2</sup>
1.	58	40	-0,83	-15,9	13,197	0,6889	252,81
2.	60	60	1,17	4,1	4,797	1,3689	16,81
3.	70	68	11,17	12,1	135,157	124,7689	146,41
4.	70	68	11,17	12,1	135,157	124,7689	146,41

5.	70	56	11,17	0,1	1,117	124,7689	0,01
----	----	----	-------	-----	-------	----------	------

Continuing Table

6.	58	40	-0,83	-15,9	13,197	0,6889	252,81
7.	30	44	-28,83	-11,9	343,077	831,1689	141,61
8.	46	32	-12,83	-23,9	306,637	164,6089	571,21
9.	62	56	3,17	0,1	0,317	10,0489	0,01
10.	60	64	1,17	8,1	9,477	1,3689	65,61
11.	64	52	5,17	-3,9	-20,163	26,7289	15,21
12.	64	40	5,17	-15,9	-82,203	26,7289	252,81
13.	64	56	5,17	0,1	0,517	26,7289	0,01
14.	64	60	5,17	4,1	21,197	26,7289	16,81
15.	60	56	1,17	0,1	0,117	1,3689	0,01
16.	60	52	1,17	-3,9	-4,563	1,3689	15,21
17.	66	60	7,17	4,1	29,397	51,4089	16,81
18.	50	44	-8,83	-11,9	105,077	77,9689	141,61
19.	66	44	7,17	-11,9	-85,323	51,4089	141,61
20.	38	60	-20,83	4,1	-85,403	433,8889	16,81
21.	62	60	3,17	4,1	12,997	10,0489	16,81
22.	46	68	-12,83	12,1	-155,243	164,6089	146,41
23.	56	60	-2,83	4,1	-11,603	8,0089	16,81
24.	50	60	-8,83	4,1	-36,203	77,9689	16,81
25.	64	52	5,17	-3,9	-20,163	26,7289	15,21
26.	50	56	-8,83	0,1	-0,883	77,9689	0,01
27.	54	54	-4,83	-1,9	9,177	23,3289	3,61
28.	54	52	-4,83	-3,9	18,837	23,3289	15,21
29.	54	52	-4,83	-3,9	18,837	23,3289	15,21
30.	42	52	-16,83	-3,9	65,637	283,2489	15,21
31.	44	52	-14,83	-3,9	57,837	219,9289	15,21

32.	44	40	-14,83	-15,9	235,797	219,9289	252,81
33.	38	48	-20,83	-7,9	164,557	433,8889	62,41
34.	46	44	-12,83	-11,9	152,677	164,6089	141,61

Continuing Table

35.	74	68	15,17	12,1	183,557	230,1289	146,41
36.	74	60	15,17	4,1	62,197	230,1289	18,81
37.	70	64	11,17	8,1	90,477	124,7689	65,61
38.	70	72	11,17	16,1	179,837	124,7689	259,21
39.	80	76	21,17	20,1	425,517	448,1689	404,01
40.	80	72	21,17	16,1	340,837	448,1689	259,21
41.	80	78	21,17	22,1	467,857	448,1689	488,41
<b>N = 41</b>	<b>2412</b>	<b>2292</b>			<b>3103,32</b>	<b>5919,80</b>	<b>4583,61</b>

Then, the writer determines the degree of  $r_{xy}$  by implementing formula as follows:

$$r_{xy} = \frac{\sum xy}{\sqrt{(\sum x^2)(\sum y^2)}}$$

$r_{xy}$  : coefficient correlation between correlated variables x and y

$\sum xy$  : the amount of multiplication between variable x and y

$\sum x^2$  : deviation of x

$\sum y^2$  : deviation of y

Finally, from the working table, it can be known that :

$\sum xy$  : 3103,32

$$\sum_x^2 : 5919,80$$

$$\sum_y^2 : 4583,61$$

$$\begin{aligned}
 \text{So } r_{xy} &: \frac{3103,32}{\sqrt{(5919,80)(4583,61)}} \\
 &= \frac{3103,32}{5209,03} \\
 &= \mathbf{0,596}
 \end{aligned}$$

## 2. To test hypothesis

After presenting the data, the writer analyzes all obtained data to give some consideration on the research.

### a. Students' mastery of past tense at the eleventh grade of Senior High School 1 Tamiang Layang

The presented data on the previous subchapter show that most of students are in sufficient level, that is 13 students or 31,41% and 9 students or 21,95% are in low level. There are only 7 students or 17,07% are in good level, 6 students or 14,63% are in very low level and 3 students or 7,32% are in poor level. The students who get the excellent level only 3 students or 7,32%.

Thus, above the total score of students' mastery of the past tense are 2412 of 41 students and the mean score is 58,83.

b. Students' ability in expressing past activities in writing

The presented data on the previous subchapter also shows that 4 students or 9,76% students are in good level, 14 students or 34,14% are in sufficient, 13 students or 31,71% are in low level, 9 students or 21,95% are in very low and 1 student or 2,44% is in poor level. The total scores of students' ability in expressing past activities in writing are 2292 and the mean score is 55,90.

c. Based on the counting above,  $r_{xy}$  is 0,596. By looking at table of coefficient correlation degree of Pearson product moment, it can be known whether there is a significant correlation or not. For  $N = 41$

$r$  table in 5 % is 0,304 and  $r$  table in 1 % is 0,393. It appears that  $r_{xy} > 0,304$  or  $r_{xy} > 0,393$ . It means the hypothesis null ( $H_0$ ) is denied and the hypothesis alternative ( $H_a$ ) is accepted. So, it can be concluded that there is a significant correlation between students' mastery of past tense and their ability in expressing past activities in writing. According to Standard Classification of correlation, the degree of correlation is positive and occurs in 0,400 - < 0,600 level. It can be stated that the correlation between the students' mastery of past tense and their ability in expressing past activities is in Fair level.

